

On the misidentification of chalcid (Hymenoptera: Chalcidoidea) parasitoids of the cabbage seedpod weevil (Coleoptera: Curculionidae) in North America

Gary A.P. Gibson¹

Agriculture and Agri-Food Canada, Biodiversity and Integrated Pest Management,
K.W. Neatby Building, 960 Carling Avenue, Ottawa, Ontario, Canada K1A 0C6

Hannes Baur

Department of Invertebrates, Naturhistorisches Museum, Bernstrasse 15, CH-3005
Bern, Switzerland

Bryan Ulmer, Lloyd Dossall

Department of Agricultural, Food and Nutritional Science, 4–10 Agriculture/Forestry Centre,
University of Alberta, Edmonton, Alberta, Canada T6G 2P5

Franck Muller

CABI Bioscience Centre, Rue des Grillons, Delémont, Switzerland

Abstract—Previous identifications in North America of *Trichomalus perfectus* (Walker, 1835) and *Mesopolobus morys* (Walker, 1848) (Chalcidoidea: Pteromalidae), the principal chalcid parasitoids of the cabbage seedpod weevil (*Ceutorhynchus obstrictus* Marsham, 1802) in Europe, are shown to be misidentifications of *Trichomalus lucidus* (Walker, 1835) and *Mesopolobus (Xenocrepis) moryoides* **sp. nov.**, respectively. *Necremnus duplicatus* Gahan, 1941 (Chalcidoidea: Eulophidae) is synonymized formally under *Necremnus tidius* (Walker, 1839) **syn. nov.**, confirming a previous, tentative synonymy. Both sexes of *N. tidius*, *M. moryoides*, and *T. lucidus* are illustrated and compared with those of similar species using macrophotography and scanning electron microphotography. Hypotheses are offered to explain why the principal chalcid parasitoids of the cabbage seedpod weevil differ between North America and Europe and how the three treated species came to be in North America.

Résumé—Les insectes connus jusqu'ici en Amérique du Nord comme *Trichomalus perfectus* (Walker, 1835) et *Mesopolobus morys* (Walker, 1848) (Chalcidoidea : Pteromalidae), les principaux chalcidiens parasitoïdes du charaçon de la graine de chou (*Ceutorhynchus obstrictus* Marsham, 1802) en Europe, sont mal identifiés; il s'agit, en fait, respectivement de *Trichomalus lucidus* (Walker, 1835) et de *Mesopolobus (Xenocrepis) moryoides* **sp. nov.** *Necremnus duplicatus* Gahan, 1941 (Chalcidoidea : Eulophidae) devient formellement un synonyme plus récent de *Necremnus tidius* (Walker, 1839) **syn. nov.**, confirmant ainsi une synonymie préliminaire antérieure. Des macrophotographies et des microphotographies au microscope électronique à balayage viennent illustrer les deux sexes de *N. tidius*, de *M. moryoides* et de *T. lucidus* et permettent des comparaisons avec les espèces similaires. Des hypothèses cherchent à expliquer pourquoi les chalcidiens parasitoïdes du charaçon de la graine de chou sont différents en Amérique du Nord et en Europe et comment les trois espèces en question se sont retrouvées en Amérique du Nord.

[Traduit par la Rédaction]

Introduction

Received 18 January 2005. Accepted 13 May 2005.

¹Corresponding author (e-mail: gibsong@agr.gc.ca).

The cabbage seedpod weevil, *Ceutorhynchus obstrictus* Marsham, 1802 (= *C. assimilis* (Paykull, 1792)) (Coleoptera: Curculionidae),

was introduced from Europe to western North America about 70 years ago. Its host range includes plants of the family Brassicaceae. The weevil initially was a pest of mustard, cabbage, turnip, rutabaga, and Brussels sprouts (*Brassica* spp.) grown for seed (Hanson *et al.* 1948; Carlson *et al.* 1951; Walz 1957). Since its introduction it has become an invasive pest throughout much of North America north of Mexico (Brodeur *et al.* 2001; Cárcamo *et al.* 2001; Mason *et al.* 2004) and a major economic pest of brassicaceous oilseed crops including canola and rape (*Brassica napus* L. and *B. rapa* L.) (Buntin *et al.* 1995; Dossdall *et al.* 2001).

The first documented presence of *C. obstrictus* in North America was from adults collected in 1931 in Vancouver, British Columbia, Canada (Hanson *et al.* 1948). Baker (1936) subsequently reared specimens from mustard seedpods in Washington State, United States of America, along with four hymenopterous parasitoids that were stated to represent at least two distinct groups. Although these specimens were not identified and have not been located, later rearings indicate they undoubtedly were chalcids. Gahan (1941) described parasitoids reared from *C. obstrictus* in turnip seedpods collected in Washington in 1937 as a new species, *Necremnus duplicatus* (Eulophidae). In addition to the reared series, Gahan also had several specimens that he did not include in the type series but which he stated seemed to be the same species, including two individuals from the Netherlands reared from Brassicaceae pods. Bouček (1959) later suggested that *N. duplicatus* is very near, if not identical, to the European species *Necremnus tidius* (Walker, 1839). Two other chalcid species were also reared from *C. obstrictus* soon after its initial discovery in Washington and subsequently identified as European species. Doucette (1944) reared an unidentified species of *Amblymerus* Walker, which was identified as *Disema* sp. in Doucette (1948), *Xenocrepis* sp. in Hanson *et al.* (1948), and *Xenocrepis pura* Mayr in Walz (1957). These names are now recognized as junior synonyms of *Mesopolobus* Westwood (1833) and *Mesopolobus morys* (Walker, 1848) (Pteromalidae), respectively (Graham 1957). Both Doucette (1944) and Breakey *et al.* (1944) also reared a species initially identified as *Trichomalus fasciatus* (Thomson, 1878) (Pteromalidae), which was a previously known parasitoid of *C. obstrictus* in Europe (Heymons 1921). However, Graham (1956) subsequently

synonymized *T. fasciatus* under *Trichomalus lucidus* (Walker, 1835), and Delucchi and Graham (1956) stated that all literature records referring to *T. fasciatus* as a parasitoid of *C. obstrictus* probably were based on misidentifications of *Trichomalus perfectus* (Walker, 1835). Using the description of *T. perfectus* provided by Delucchi and Graham (1956), Peck (1963) identified individuals of a *Trichomalus* species reared from *C. obstrictus* in British Columbia as *T. perfectus*. Ever since then, this name has been used for the *Trichomalus* species parasitizing *C. obstrictus* in western North America. It was also used by Buntin (1998) for parasitoids reared from the seedpods of *B. napus* in Georgia, United States of America, the only locality in eastern North America for which parasitoids of *C. obstrictus* have been reported.

The species identified as *M. morys* and *T. perfectus* were not reported in North America prior to being reared from *C. obstrictus* soon after the first recorded occurrence of this weevil. Therefore, it has long been assumed that both the parasitoid species and *C. obstrictus* were introduced together in seed shipments (Hanson *et al.* 1948; McLeod 1953). *Trichomalus perfectus* and *M. morys* are the principal chalcid parasitoids of *C. obstrictus* in Europe, where parasitism rates typically exceed 50%, can reach 90%, and can be high even at low pest densities (Buntin 1998; Murchie and Williams 1998). *Trichomalus perfectus*, *M. morys*, and *N. duplicatus* have been reported as the most important parasitoids of *C. obstrictus* in North America (Kuhlmann *et al.* 2002), but parasitism rates are generally much lower than those found in Europe (Harmon and McCaffrey 1997; Buntin 1998).

In their review of the scientific literature relating to parasitoids of the cabbage seedpod weevil, Murchie and Williams (1998, p. 165) stated that "the study of literature is hampered by synonymy and misidentification". During the course of identifying chalcid parasitoids of the cabbage seedpod weevil in western Canada, we confirmed that *N. duplicatus* is a junior synonym of *N. tidius*, as has long been speculated. We also discovered that the species reported in the North American literature as *T. perfectus* and *M. morys* have been consistently misidentified. The species identified as *T. perfectus* is *T. lucidus*, which is reported as a principal parasitoid of *Ceutorhynchus alliariae* Brisout, 1860 and *Ceutorhynchus roberti* Gyllenhal,

1837 in Switzerland but is not known to be a common parasitoid of *C. obstrictus* in Europe (Klander 2001; Muller *et al.* 2004). The species identified as *M. morys* represents a new species of uncertain area of origin. In this paper we describe the new *Mesopolobus* species and differentiate its dimorphic sexes from those of similar European species, provide features to differentiate *T. lucidus* from *T. perfectus*, and formalize the synonymy of *N. duplicatus* under *N. tidius*. This is done to clarify the nomenclature and to provide evidence that North America lacks all the principal chalcid biological control agents of *C. obstrictus* found on canola in Europe.

Materials and methods

This study is based on voucher specimens of species previously reported in the literature as reared from *C. obstrictus* in Canada and the United States of America, specimens reared from canola and rape seedpods in Alberta and Saskatchewan during 2002 and 2003, specimens reared from *Ceutorhynchus* species in Germany and Switzerland during 2000–2003, and other specimens of relevant species in the following collections. An asterisk before a codon indicates a collection in which cited type material that was not examined is deposited.

BMNH	The Natural History Museum, London, United Kingdom
CNC	Canadian National Collection of Insects and Arachnids, Ottawa, Ontario, Canada
MTJP	Maurice T. James Entomological Collection, Pullman, Washington, United States of America
MZLU	Museum of Zoology, Lund University, Lund, Sweden
NMBS	Naturhistorisches Museum, Bern, Switzerland
*NMWA	Naturhistorisches Museum, Vienna, Austria
OSAC	Oregon State Arthropod Collection, Oregon State University, Corvallis, Oregon, United States of America
*OXUM	Hope Entomological Collections, Oxford University Museum of Natural History, Oxford, United Kingdom
UCDC	Bohart Museum of Entomology, University of California, Davis, California, United States of America

UGCA	University of Georgia Museum of Natural History, Athens, Georgia, United States of America
USNM	United States National Museum of Natural History, Washington, District of Columbia, United States of America
WFBM	William F. Barr Entomological Museum, University of Idaho, Moscow, Idaho, United States of America
WFIC	Western Forest Insect Collection, Corvallis, Oregon, United States of America

Our initial concepts of European *Mesopolobus* and *Trichomalus* were based on Graham (1969), of European *Necremnus* on Bouček (1959) and Graham (1959), and of Nearctic *Necremnus* on Gahan (1941). Type material of the senior synonym of putative species was then examined to verify these concepts, which confirmed that valid species names were available for the North American species of *Necremnus* and *Trichomalus*. Type material of the junior synonyms of relevant names in these genera was not examined because this study is not a taxonomic revision, and the lists of synonyms we provide follow the above authors and Noyes (2002). Type material in the BMNH of both the senior and junior synonyms of species assigned to *Mesopolobus* (*Xenocrepis*) was examined to substantiate that a name was not available for the species of *Mesopolobus* reared from *C. obstrictus* in North America.

Unless stated otherwise, specimens cited under “Material examined” from localities in Canada are deposited in the CNC, and those cited from localities in the United States are deposited in the USNM. Collection data cited for material examined have been standardized; *C. obstrictus* has been substituted for either *C. assimilis* or variants of “cabbage seedpod weevil” in the original label data, and county names have been included for all United States collection localities. A date preceded by “em.” is the emergence date, and “HP” refers to host plant. Scientific and common names of Brassicaceae species follow Warwick *et al.* (2004). Names of most collectors have been abbreviated to save space, as follows: AF, A. Fox; AJH, A.J. Hanson; AJW, A.J. Walz; BH, B. Harmon; B&O, M. Braun and O. Olfert; CFD, C.F. Doucette; DEF, D.E. Fox; DJS, D.J. Schotzko; ECC, E.C. Carlson; GDB, G.D.

Buntin; GY, G. Yamanaka; JM, J. McLeod; RB, R. Bazett; RG, R. Glendenning; RLD, R.L. Doust; U&D, B. Ulmer and L. Dosdall; and WHL, W.H. Lange.

Terms for structure and sculpture follow Gibson (1995, 1997) and Gibson (2003), respectively. The treated genera can be distinguished from other genera of Eulophidae and Pteromalidae in North America using the keys of Schauff *et al.* (1997) and Bouček and Heydon (1997), respectively. The diagnosis provided for each species includes only those features that serve to differentiate it within its respective genus, though in combination the features are sufficient to distinguish the species from all other known parasitoids of *C. obstructus* in North America. Descriptions are based on observations made by the senior author using a Nikon SMZ-1500 microscope fitted with a 10-mm ocular grid having 100 divisions, with an incandescent light source and a translucent acetate diffuser to reduce glare. Absolute measurements provided as parts of ratios of body parts for *M. moryoides* were taken at a magnification where 10 units = 0.8 mm. Forewings were photographed using a compound microscope. These images and scanning electron microphotographs were digitally retouched using Adobe Photoshop™ to enhance clarity.

Species treatments

Necremnus tidius (Walker)

(Figs. 1, 3, 5, 29)

Eulophus tidius Walker, 1839: 146–147. Syntype ♂ (BMNH, examined).

Eulophus zeugma Walker, 1839: 183. Syntype ♀ (BMNH); synonymy by Bouček and Askew 1968: 67.

Eulophus metanira Walker, 1839: 183–184. Lectotype ♀ (OXUM) designated by Graham 1991: 8; synonymy by Graham 1991: 8.

Eulophus hippia Walker, 1839: 184. Syntype ♀ (BMNH); synonymy by Bouček and Askew 1968: 67.

Eulophus mamurius Walker, 1848: 232. Syntype ♂ (BMNH); synonymy by Bouček and Askew 1968: 67.

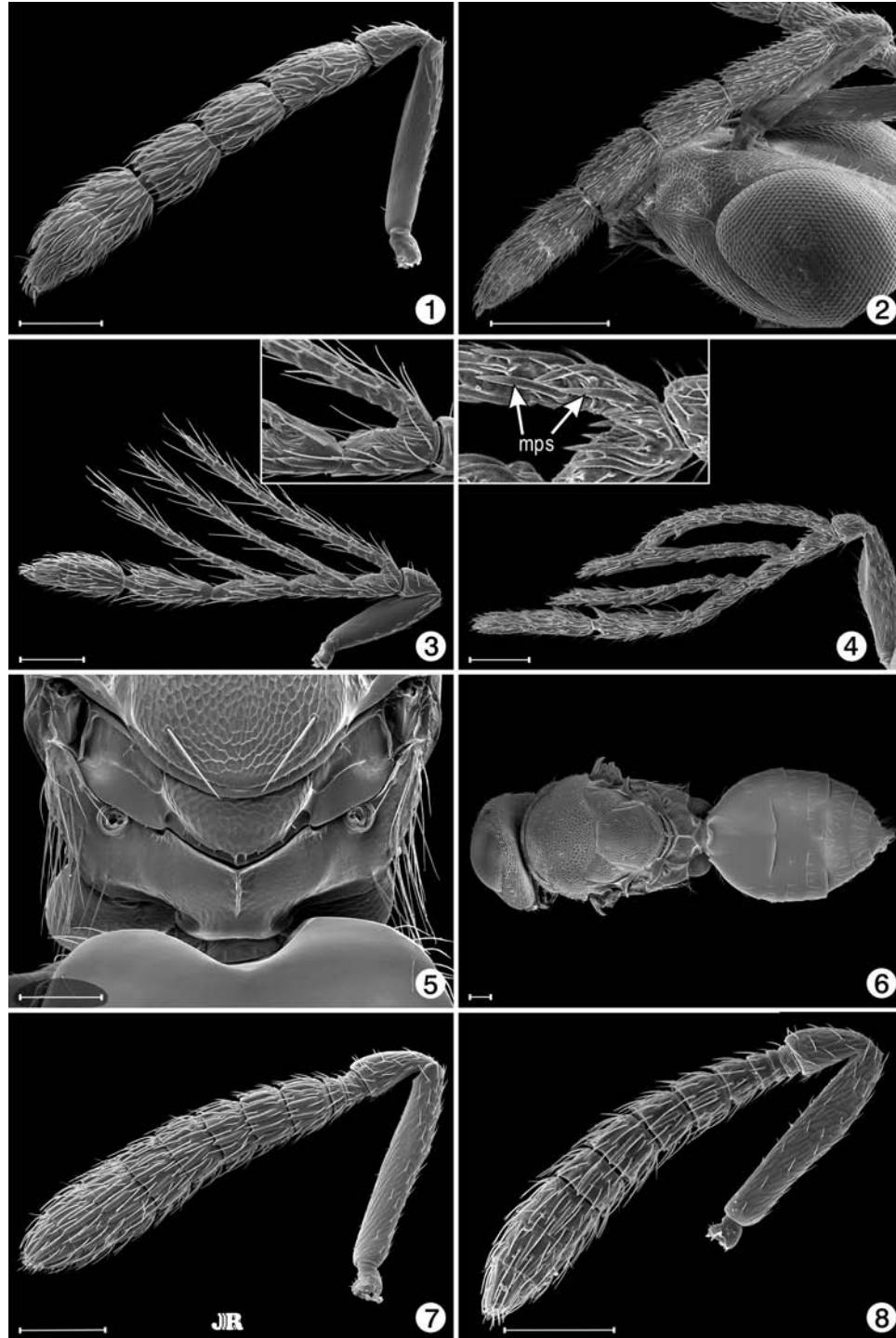
Entedon cyrinus Goureau, 1851: 143, pl. 5, no. 5, Figs. 5–7. Syntype ♀ (OXUM); synonymy by Graham 1963: 190.

Necremnus duplicatus Gahan, 1941: 201–203. Holotype ♀ (USNM, examined). **New synonymy.** Breakey *et al.* 1944: 118; Doucette 1944: 124; Doucette 1948: 764; Hanson *et al.* 1948: 14, 15; Carlson *et al.* 1950: 390; McLeod 1953: 13, 16; Walz 1957: 220; Peck 1963: 100; Murchie and Williams 1998: 165; Cárcamo *et al.* 2001: 205.

Material examined

CANADA. British Columbia: Abbotsford, 12.vii.1950 (1 ♂), 12.vii.1950, HP turnip (1 ♀, 2 ♂), *ex. C. obstructus*, JM. Aldergrove, 12.vii.1950, JM (2 ♀), 12.vii.1950, em. 24 (1 ♂), 28.vii.1950 (1 ♀), *ex. C. obstructus*, HP turnip seed. Hatzig, 12.vii.1950, *ex. C. obstructus*, GY (1 ♀); 12.vii.1950, *ex. C. obstructus*, HP turnip (1 ♀, 1 ♂). Ladner, 22.vi.1951, *ex. C. obstructus*, HP turnip, KY (1 ♂); 29.vii.1953, em. 3 (1 ♂), 9 (1 ♀), 10 (1 ♂), 17 (1 ♀, 1 ♂), 22 (1 ♀), and 27.viii.1953 (1 ♂), *ex. C. obstructus*, HP *Brassica*, JM. Matsqui, 12.vii.1950 (1 ♀), 12.vii.1950, HP Cabbage (3 ♀, 2 ♂), *ex. C. obstructus*, JM. Newton Station, 12.vii.1950, *ex. C. obstructus*, JM (3 ♀). Nicomen Island, 17.vii.1949, em. 10 (1 ♀) and 30.viii.1949 (1 ♂), *ex. C. obstructus*, RB. Sardis, 26.vii.1949, em. 1 (3 ♂) and 30.viii.1949 (1 ♀), *ex. C. obstructus*, RB. **Alberta:** Coaldale, *ca.* 1 km NE, 49°44.92N, 112°30.05W, 16–30.vii.2002, em. *ca.* 1.viii.2002, *ex. B. napus* pods, U&D (4 ♀, 4 ♂). Lethbridge, 4 km SW, em. *ca.* 23.vii.2003, *ex. B. rapa* pods, U&D (20 ♀, 10 ♂). Lethbridge, 2001, dissected from *S. arvensis* pod (1 ♀). **Saskatchewan:** RM108 SW15 11 16 W3, 23.vii.2003, em. 8–12.viii.2003 (4 ♀, 1 ♂), RM108 SW15 18 16 W3, 23.vii.2003, em. 11.viii.2003 (5 ♀), RM110 SW15 11 16 W3, 23.vii.2003, em. 14.vii.2003 (2 ♀), RM110 SW26 11 12 W3, 23.vii.2003, em. 6–8.vii.2003 (3 ♀, 2 ♂), RM142 NE28 15 30 W3, 23.vii.2003, em. 12.viii.2003 (1 ♀), B&O. **UNITED STATES. Georgia:** Spalding Co.: Bledsoe Research Farm near Griffin, winter crop without insecticide, 13.v.1996 (1 ♂, UGCA), 29.v.1996 (2 ♂, UGCA), 4.vi.1996 (1 ♀, 1 ♂, UGCA), trap crop edge, 29.v.1996 (1 ♂, UGCA), *ex. canola* seedpods, GDB. **Idaho:** Canyon Co.: Melba, 2 mi. N, 18.vi.1957, carrot flower, H.W. Homan (2 ♀, WFBM). Cassia Co.: Oakley, 27.vi.1931, no. 8, *S. sophia*, DEF (1 ♀). Clearwater Co.: Lenore, 7.vi.1948, 1000 ft., AJW (4 ♀, 4 ♂, WFBM). Idaho Co.: Hagerman Valley, 16.v.1929, *S. filipes* (1 ♀, WFBM). Latah Co.:

Figs. 1–8. 1 and 2, ♀ antenna: 1, *Necremnus tidius*; 2, *Necremnus* ? *metalarus*. 3 and 4, ♂ antenna with base of first flagellar segment (insert: mps, multiporous plate sensilla): 3, *N. tidius*; 4, *Necremnus leucarthros*. 5, *N. tidius*, ♀ propodeum. 6–8, *Mesopolobus moryoides*: 6, ♀ dorsal habitus; 7, ♀ antenna; 8, ♂ antenna. Scale bars = 100 µm.



Moscow, 2 mi. E, 10.vii.1988, ex. *C. obstructus*, BH (1 ♂). Troy, 5 mi. S, 17.vii.1988, ex. *C. obstructus*, BH (1 ♀); 3 mi. NE, 18, 20, and 23.vii.1979, DJS (3 ♀, WFBM). Lewis Co.: Nezperce, 6 mi. SW, 25.vii.1979, DJS (3 ♀, WFBM). Nez Perce Co.: E. Lewiston Flats, vii.1947, ex. rape pod (1 ♀). Gifford, 11.vi.1949, 2900 ft., AJW (11 ♀, 3 ♂, WFBM). Twin Falls Co.: Castleford, 14.vi.1928, *S. altissimum* (1 ♀), 28.vi.1928, *Sophia sophia* (1 ♂). Hollister, 24.vi.1927, *S. filipes* (1 ♀, WFBM), 24.vi.1928, *S. altissimum* (2 ♀), 26.vi.1931, DEF (1 ♂), 16.v.1931, *S. sophia*, DEF (1 ♀), 9.vii.1932, *S. parviflora*, DEF (1 ♂, WFBM). Roseworth, 25.vi.1931, *S. pestifer*, DEF (1 ♂). **Illinois:** Champaign Co.: Mayview, 30.v.1951, ex. *Ceutorhynchus* sp. in Tansy mustard, D.M. Tuttle (3 ♀, 6 ♂). **Washington:** Pierce Co.: Sumner, 30.x.1946, from pupae in seedpods, CFD (1 ♀). San Juan Co.: San Juan Island, viii.1945, em. pods *Brassica campestris*, CFD (5 ♀, 7 ♂). Skagit Co.: Laconner, 22.vii.1943, *Ceutorhynchus* in rutabaga seedpod, CFD (2 ♀). Mt. Vernon, reared 3.vii.1937, ex. *C. obstructus* in turnip pod, AJH (♀ holotype, 19 ♀, 21 ♂ paratypes, USNM type no. 5470; 2 ♀, 2 ♂, MTJP), 18.x.1943, in cabbage pods, ECC (1 ♀, MTJP).

Diagnosis

Both sexes: body comparatively dark olive-green to blackish green with variably extensive bronze luster, at least on scutellum, under some angles of light; legs dark with knees narrowly, dorsal surface of protibia usually, and basitarsus of meso- and metatarsus white, the second tarsal segments sometimes also white but usually with at least a slight brown infusion; forewing (Fig. 29) with postmarginal vein distinctly longer than stigmal vein, speculum closed posteriorly by subcubital line of setae, and membrane entirely hyaline, including near stigmal vein. **Female:** flagellum (Fig. 1) with first funicular segment distinctly shorter than twice length of pedicel, second funicular segment less than twice as long as wide, and third funicular segment less than 1.5 times as long as wide; gaster less than 1.75 times as long as wide. **Male:** flagellum (Fig. 3) with fourth funicular segment at most about as long as clava and less than 1.5 times as long as third segment, and with first three funicular segments each having long ramus, the rami all extending to a level between base and apex of clava when appressed to flagellum, and with long, hairlike setae but

without multiporous plate sensilla (in regional specimens reared from *C. obstructus*); propodeum with median carina but otherwise smooth with very fine, meshlike sculpture, neither reticulate nor with any oblique carinae (Fig. 5).

Recognition

Gahan (1941) provided a key to the North American species of *Necremnus* when he described *N. duplicatus*, and both Bouček (1959) and Graham (1959) provided keys to the European species. Males of *Necremnus* are much more readily identified to species than are females. In all three of the above keys, *N. duplicatus* or *N. tidius* was keyed together with *Necremnus leucarthros* (Nees, 1834) and the two taxa were distinguished by structure of the flagellar sensilla. Males of *N. leucarthros* have short setae and strong, spinelike, multiporous plate sensilla (mps) on all the flagellar segments and rami (Fig. 4). Males of *N. tidius* have long, hairlike setae on the rami (Fig. 3). Furthermore, all males reared from *C. obstructus* in North America that we identify as *N. tidius* do not have mps on the rami (Fig. 3) (see further below). Females of *N. leucarthros* and *N. tidius* are more difficult to differentiate. Both Bouček (1959) and Graham (1959) used colour to separate females, with those of *N. tidius* stated to be bronze or greenish bronze and those of *N. leucarthros* stated to be dark green or greenish. *Necremnus* females reared from *C. obstructus* in North America and females from Europe identified as *N. tidius* (BMNH, CNC, NMBS) are comparatively dark metallic green with a variably conspicuous coppery luster at least on the scutellum, the luster sometimes restricted only to the ridges forming the interstices of the reticulations. However, some females of *N. leucarthros* from England (BMNH) and France (USNM) that are associated with males have a very similar colour, including a slight coppery luster. Gahan (1941) stated that females of *N. leucarthros* have the gaster about twice as long as wide. Females identified as *N. leucarthros* that we have seen have the gaster about 1.8–2 times as long as wide, whereas similarly preserved females of *N. tidius*, including those reared from *C. obstructus* in North America, have the gaster only about 1.4–1.7 times as long as wide. Relative length to width ratios of the gaster can be quite variable because they are affected by whether the

specimen is air-dried or critical-point-dried. Air-dried specimens often have the gaster strongly collapsed medially so as to be U-shaped in cross section, whereas the gaster of critical-point-dried specimens often is inflated.

Necremnus leucarthros is not known to occur in North America. Gahan (1941) noted that it had been imported from Europe and reared in Utah as a potential biological control agent of the alfalfa weevil, *Hypera variabilis* (Herbst, 1795) (Curculionidae), but was not known to have been released. Two other species described by Gahan (1941) that are restricted to North America, *Necremnus breviramulus* and *Necremnus oregonensis*, might also be confused with *N. tidius* because they lack forewing maculation, but females of these two species are bright metallic green without coppery luster and, like *N. leucarthros* females, have the gaster about twice as long as wide. The males of the two species are also similar to *N. leucarthros* males in flagellar sensillar structure and thus are distinguished from *N. tidius* males.

As noted above, all *Necremnus* males reared from *C. obstrictus* in North America that we examined did not have mps on the rami. However, either there is host-induced variation for this feature or sibling species exist within what we interpret as *N. tidius*. Two males from France and one male from Germany (CNC, NMBS) reared from *Ceutorhynchus typhae* (Herbst, 1795) (= *C. floralis* (Paykull) *vide* Colonnelli, 1998) on shepherd's purse, *Capsella bursa-pastoris* (L.) Medik. (Brassicaceae), have mps on the apical two rami. The same flagellar structure is possessed by a male reared from the cereal stem moth, *Ochsenheimeria vacculella* Fischer von Röslerstamm, 1842 (Lepidoptera: Ypsolophidae), from "annual ryegrass" (Poaceae) in Oregon (Linn Co., 7.vi.1994, S. Panasahatham) (USNM). These males and those reared from *C. obstrictus* have the knees only very narrowly lightly coloured and the fourth funicular segment less than 1.5 times the length of the third segment. Females associated with the males have the first funicular segment distinctly less than twice as long as the pedicel, the second funicular segment less than twice as long as wide, and the third segment less than 1.5 times as long as wide (Fig. 1), key features used by Bouček (1959) or Graham (1959) to distinguish females of *N. tidius* and *N. leucarthros* from some other *Necremnus* species. Some males we have seen from Europe, reared from Lepidoptera hosts, (BMNH, CNC,

WFIC) and two males from California without host data (CNC) have approximately the basal half of the meso- and metatibiae more or less white, the fourth funicular segment distinctly longer relative to the third funicular segment, and mps on all three rami (except one male from California that does not have mps on the basal ramus). Females associated with these males through label data are dissimilar to the males because their knees are only narrowly lightly coloured, as for *N. tidius* and *N. leucarthros*, but unlike females of these two species they have longer funicular segments, including having the second funicular segment twice as long as wide, the third segment more than 1.5 times as long as wide, and often the first funicular segment about twice as long as the pedicel (*cf.* Figs. 1, 2). Furthermore, the gaster is comparatively long, similar to that described for *N. leucarthros*. These individuals undoubtedly constitute a different species from that which we identify as *N. tidius* and most likely represent a variant of *Necremnus metalarus* (Walker, 1839) that entirely lacks forewing maculation, as suggested for some specimens from Yugoslavia discussed by Bouček (1959). *Necremnus metalarus* was introduced from Europe into the western United States for biological control of the larch casebearer, *Coleophora laricella* (Hübner, 1817) (Lepidoptera: Coleophoridae) (Ryan *et al.* 1977). Some voucher specimens (WFIC) from a laboratory culture of *N. metalarus* that was established from material introduced from Austria have entirely hyaline forewings, lacking the diagnostic infuscation from around the stigmal vein, which demonstrates that this feature is variable for the species. Because those females without forewing maculation are very similar to *N. tidius* females except for slight differences in proportions of the antennal segments and gaster, it is possible that at least some of the Lepidoptera host records listed by Noyes (2002) for *N. tidius* are based on mis-identifications.

Hosts and biology

Necremnus tidius is a solitary larval ectoparasitoid. In North America it has been reared definitely only from *Ceutorhynchus* species, including *C. obstrictus*. Specimens from Idaho (USNM, WFBM) bear label data with *Sophia sophia*, *S. parviflora*, *S. filipes*, *S. altissimum*, and *S. pestifer*. *Sophia sophia* and *S. parviflora* are synonyms of *Descurainia sophia* (L.) Webb

(Brassicaceae), flixweed, an introduced European species that is now transcontinental in North America. *S. filipes* likely refers to what is now classified as *Descurainia pinnata* subsp. *intermedia* (Rydb.) Detling (Brassicaceae), western tansy mustard, which is native and restricted to western North America, whereas *S. altissimum* likely refers to *Sisymbrium altissimum* L. (Brassicaceae), tumble mustard, another introduced European species that is now transcontinental. The record of *S. pestifer* likely refers to *Salsola pestifer* A. Nels., a junior synonym of *Salsola tragus* L. (Chenopodiaceae), Russian thistle, a now transcontinental species that was introduced from Europe prior to 1900.

In Europe, Miczulski (1968) recorded *N. tidius* as a parasitoid of *C. obstrictus* in Poland, and a *Necremnus* species was reared from *C. obstrictus* in Germany (Laborius 1972), England (Nasredlin 1973; McKenna 1992), and Spain (Gomez and Zamora 1994). Kuhlmann *et al.* (2001) reported *N. tidius* as a parasitoid of *C. typhae* on *C. bursa-pastoris* in Germany, which was introduced to North America before 1700 and is now transcontinental (Frankton and Mulligan 1971). However, Kuhlmann *et al.* (2001) and Muller *et al.* (2004) did not rear it from *C. obstrictus* on *B. napus* in either Germany or Switzerland. Other host records for *N. tidius* in Europe listed by Noyes (2002) are *Apion arrogans* Wencker, 1858 (Curculionidae), *Psylliodes marcida* Illiger, 1807 and *P. napi* (Fabr., 1792) (Coleoptera: Chrysomelidae), and, as doubtful records, *Argyresthia fundella* (Fischer von Röslerstamm, 1835) (Lepidoptera: Yponomeutidae) (Spaic 1972), *Chlorops pumilionis* Bjerkander, 1778 (Diptera: Chloropidae), and *Phytomyza ranunculi* Schrank, 1803 (Diptera: Agromyzidae) (Bouček 1959).

Distribution

Paleartic: Canary Islands, Croatia, Czech Republic, England, France, Germany, Ireland, Israel, Netherlands, Russia, Slovakia, Spain, Sweden, Turkey, Yugoslavia (Montenegro, Serbia) (Noyes 2002). **Nearctic:** see Material examined; the records from Alberta, Saskatchewan, Georgia, and Illinois represent new provincial and state records. Doucette (1948) also reported *N. tidius* from Oregon (Lincoln Co., Logsdan), but these specimens were not located.

Remarks

Our formal synonymy of *N. duplicatus* under *N. tidius* confirms the opinion of Bouček (1959) that the species likely were conspecific. The specimens listed above from Idaho that were collected on flixweed, tumble mustard, western tansy mustard, and Russian thistle were all collected between 1927 and 1933, prior to the known presence of *C. obstrictus* in Idaho. This may indicate that *C. obstrictus* was present in western North America earlier than the first collection records show or that *N. tidius* either is a naturally occurring Holarctic species or was introduced prior to the introduction of *C. obstrictus* with some other host (possibly on some non-*Brassica* host plant such as *C. bursa-pastoris*, *D. sophia*, or *S. altissimum*). Study of voucher specimens reared from canola seedpods by Buntin (1998) proves that *N. tidius* is present in Georgia, but only as a quite rare parasitoid of *C. obstrictus*. It is unknown whether its presence in the southeastern United States results from introduction with *C. obstrictus* from western North America or whether *N. tidius* is simply a very widely distributed species. The fact that Gahan (1941) had specimens only from Washington and Idaho when he described *N. duplicatus* probably is not significant because his revision of the genus was based only on specimens present at that time in the USNM.

Mesopolobus (Xenocrepis) moryoides Gibson sp. nov.

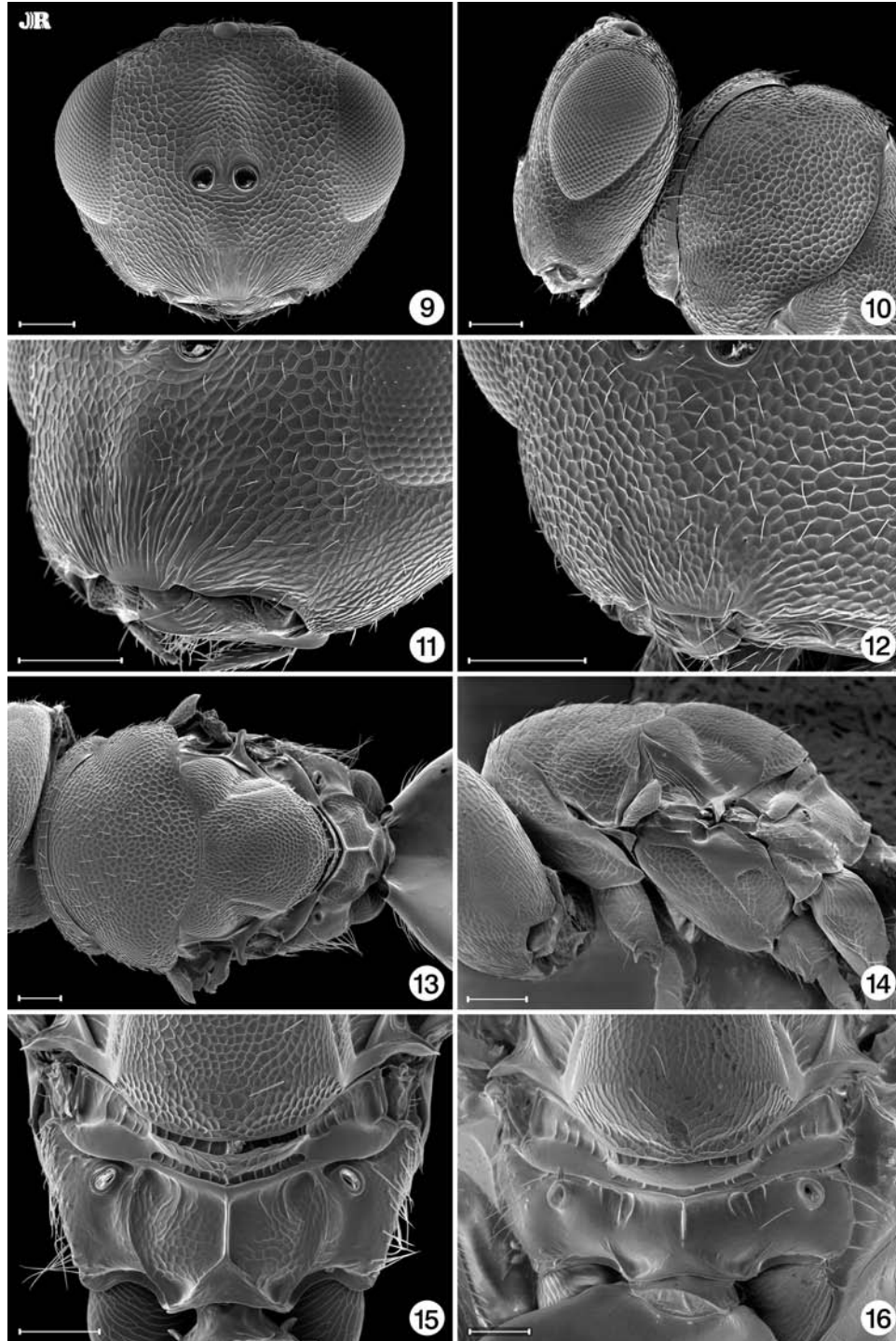
(Figs. 6–11, 13–15, 17, 30, 31)

Misidentifications. *Amblymerus* sp.: Doucette 1944: 124. *Disema* sp.: Doucette 1948: 765. *Xenocrepis* sp.: Hanson *et al.* 1948: 14. *Xenocrepis* sp. (*lapsus* for *Xenocrepis*): Hanson *et al.* 1948: 15. *Xenocrepis pura* Mayr: Carlson *et al.* 1951: 963; McLeod 1953: 13, 17; Walz 1957: 220. *Xenocrepis morys* (Walker): Peck 1963: 664–665 (in part). *Mesopolobus morys* (Walker): Burks 1979: 816 (in part); Murchie and Williams 1998: 164 (in part); Cárcamo *et al.* 2001: 205.

Type material

Holotype ♀ (USNM): “[United States of America] IDAHO: Latch [*lapsus* for Latah] Co., Potlatch, VII-1979, ex. *Ceutorhynchus assimilis*”. **Allotype** ♂ (USNM), same data as

Figs. 9–16. 9–11, *Mesopolobus moryoides* ♀: 9, head (frontal); 10, head (lateral) and mesoscutum (dorsal); 11, lower face (oblique view). 12, *Mesopolobus morys*, lower face (oblique view). 13 and 14, *M. moryoides*: 13, ♀ mesosoma (dorsal); 14, ♂ mesosoma (lateral). 15 and 16, ♀ apex of scutellum-propodeum (dorsal): 15, *M. moryoides*; 16, *Mesopolobus trasullus*. Scale bars = 100 µm.



holotype. **Paratypes. CANADA. British Columbia:** Abbotsford, 12.vii.1950, ex. *C. obstructus*, JM (2 ♀). Aldergrove, 12.vii.1950, ex. *C. obstructus*, HP turnip (1 ♀). Creston, 17.vi.2001, canola sweep sample, AF (5 ♀). Ladner, 29.vii.1953 (8 ♀), em. 9–27.viii.1953 (7 ♀, 5 ♂), HP *Brassica*, JM; 26.vii.1954, em. 16.viii.1954, HP *Brassica*, JM (3 ♀). Matsqui, 12.vii.1950, HP turnip (2 ♀), 12.vii.1950, JM (3 ♀), ex. *C. obstructus*. Newton Station, 12.vii.1950, HP turnip (1 ♀). Nicomen Island, 3.viii.1951, ex. *C. obstructus*, HP wild mustard, GY (5 ♀, 2 ♂). Sardis, 26.vii.1949, em. 19.viii.1949, ex. *C. obstructus*, HP wild mustard/turnip seed, RB (3 ♀); 12.vii.1950, em. 28.vii.1950 (1 ♂), em. 26.viii.1950 (1 ♀), ex. *C. obstructus*, HP turnip seed. Vancouver, University of British Columbia, 12.vii.1950, em. 26.vii.1950, ex. *C. obstructus*, HP turnip seed (1 ♀). **UNITED STATES. California:** Alameda Co.: Berkeley, 14.vii.1950, ex. *C. obstructus*, RLD (3 ♀). San Joaquin Co.: Thornton, 7.vi.1951, mustard, ECC (12 ♀, 4 ♂, UCDC). San Mateo Co.: Half Moon Bay, 13.vii.1950, ECC (1 ♀, CNC). Pescadero, 5 (1 ♀, 1 ♂), 6 (1 ♀), and 9.viii.1950 (1 ♀, 1 ♂), WHL. **Georgia:** Spalding Co.: Bledsoe Research Farm near Griffin, winter crop without insecticide, 1.v.1995 (1 ♂, UGCA), trap crop center, 29.v.1996 (1 ♀, UGCA), ex. canola seedpods, GDB. **Idaho:** Clearwater Co.: Lenore, vii.1947, rape pod, CFD (10 ♀, 4 ♂); 7.vi.1948, ex. *C. obstructus* on rape seed, AJW (2 ♀, 1 ♂); 7.vi.1948, 1000 ft., AJW (4 ♀, 1 ♂, WFBM). Latah Co.: Moscow, viii.1946, turnip pods, CFD (5 ♀, 1 ♂). Potlach, vii.1979, ex. *C. obstructus* (4 ♀, 5 ♂); 2 mi. NW, 18, 20, 23, 25, 26, 30, and 31.vii.1979, DJS (57 ♀, 7 ♂, WFBM). Troy, 3 mi. NE, 25, 30.vii.1979, DJS (1 ♀, 1 ♂, WFBM). Lewis Co.: Nezperce, 30.vii.1979, HWH.20.79, A. Ahmad (1 ♀, 2 ♂, WFBM); 6 mi. SW, 26, 30, and 31.vii.1979, 1.viii.1979, DJS (18 ♀, 1 ♂, WFBM). Nez Perce Co.: E. Lewiston Flats, vii.1947, ex. rape pods, CFD (E) (1 ♂). Gifford, 7, 11.vi.1949, 2900 ft., ex. *C. obstructus*, AJW (10 ♀, 15 ♂, WFBM). **Illinois:** Champaign Co.: Mayview, 30.v.1951, ex. *Ceutorhynchus* sp. in Tansy mustard seed, D.M. Tuttle (2 ♀, 1 ♂). **Oregon:** Benton Co.: Corvallis, 10, 13.vii.1951, ex. weevil grub on turnip and cabbage, H.H. Crowell (2 ♀, OSAC). Marion Co.: Salem, 8 mi. E, 20.vi.1968, ex. Brassicaceae (2 ♀, 2 ♂, OSAC). **Washington:** Pierce Co.: Sumner, 6.vii.1943,

C. obstructus larva, CFD (1 ♀); 9.vii.1945, rutabaga pods, CFD (6 ♀); 12.vi.1946, pods crucifers, CFD (4 ♀). San Juan Co.: San Juan Island, viii.1945, ex. pods *Brassica campestris*, CFD (24 ♀, 16 ♂). Skagit Co.: Mount Vernon, 3.vii.1936, ex. *C. obstructus*, AJH (3 ♀, 1 ♂); reared 3.vii.1937, ex. *C. obstructus* in turnip pod, AJH (12 ♀, 29 ♂; 2 ♀, 2 ♂, MTJP).

Etymology

The name *moryoides* is formed from the species name *morys* and the suffix *oides*, meaning “resembling”, in reference to the distinctively widened marginal vein shared by males of the two species.

Diagnosis

Both sexes: tegula dark, not contrasting in colour with rest of mesosoma; legs with trochanters and femora extensively dark; clypeus strigose (Fig. 11); pronotum rounded dorsally, without transverse carina distinguishing collar from neck (Figs. 10, 14); propodeum with distinct meshlike sculpture medially between spiracles (Figs. 15, 17); forewing with basal fold bare dorsally (Figs. 30, 31). **Male:** marginal vein conspicuously widened (Fig. 31); gaster dark without yellow spot dorsally.

Description

Holotype female. Length: 2.3 mm. Head dull metallic green; palpi brown; scape yellow to slightly brown dorsoapically, pedicel and flagellum more distinctly brown, but funicle and clava with white mps. Head (Figs. 9, 10) width : height : length, 9.6:7.3:3.5; eye height : eye width : length of malar space : width of oral cavity, 4.4:3.3:2.1:4.3; OOL : LOL : POL : maximum diameter of anterior ocellus, 1.2:1.2:2.6:0.8; minimum distance between eyes dorsally, 5.8. Face reticulate; clypeus strigose, the anterior margin truncate (Figs. 9, 11). Antenna inserted above imaginary line drawn between lower orbits (Fig. 9), with ventral margin of torulus about 1.4 times farther from anterior ocellus than from anterior margin of clypeus. Antennal formula 1:1:3:5:3, but clava with small, circular, terminal micropilose region superficially appearing as fourth claval segment; scape not quite extending to ventral margin of anterior ocellus, its length excluding radicle about 0.75 times eye height; pedicel twice as long as wide, its apical width slightly greater than combined length of three strongly transverse anelli but less than width of

flagellum; funicular segments transverse, each with dense row of mps, the sensilla somewhat more widely separated on basal segments but most sensilla separated by distance similar to or less than width of sensillum (Fig. 7); clava 1.7 times as long as wide and equal in length to apical three funicular segments; combined length of flagellum and pedicel about 0.75 times head width.

Mesosoma dull metallic green with slight bronze luster on mesonotum under some angles of light, about 1.4 times as long as wide; tegula not contrasting distinctly in colour with mesosoma, with slight metallic luster basally but brownish hyaline over about apical half. Pronotum rounded anteriorly, without transverse carina differentiating collar from neck (Figs. 10, 14), in dorsal view very short, only about 0.08 times as long as mesoscutum (Fig. 13). Mesonotum (Fig. 13) reticulate, the reticulations only slightly smaller on scutellum than on mesoscutum; mesoscutum about 1.6 times as wide as long and with obscure, scattered, tiny setiferous punctures anteriorly; scutellum slightly longer than wide, with frenum obscurely differentiated at level of posterior paralaral setae. Dorsellum reticulate-coriaceous (Fig. 15). Propodeum (Fig. 15) with complete plical furrows differentiating distinct median area, the outer margin of each plical furrow carinate posterior to about level of posterior margin of spiracle; median area about twice as wide as long, distinctly reticulate with line of crenulae along anterior margin and anterolateral fovea, and with an inverted Y-shaped carinal complex formed by complete median carina and carinately margined adpetiolar strip; callus setose only lateral to spiracle, with region between postspiracular furrow and plical furrow distinctly sculptured, similar to that of median area. Forewing (Fig. 30) hyaline, venation whitish yellow; costal cell ventrally with line of anterior setae widely spaced medially; basal cell, basal fold, and mediocubital fold bare; speculum narrowed to juncture of marginal and stigmal veins; relative length of costal cell : marginal vein : stigmal vein : postmarginal vein = 9.1:4.4:3.1:4.4. Legs with coxae, trochanters, and all but extreme apices of femora dark with slight metallic luster; trochantelli, apices of femora, tibiae, and basal four tarsal segments yellowish white, but meso- and metatibiae

extensively light brown medially and apical tarsal segment darker brown.

Gaster broadly ovate, about 1.3 times as long as wide and subequal in length to mesosoma (Fig. 6); Gt₁ smooth, shiny, with metallic green to blue luster except for coppery brown posterior margin; Gt₂–Gt₄ mostly coppery brown dorsally but with progressively larger anterolateral metallic regions of similar luster as on Gt₁; Gt₅ to syntergum with metallic luster similar to that of Gt₁; Gt₂ to syntergum finely coriaceous except posterior margins of Gt₂–Gt₄ broadly smooth; Gt₂ and Gt₃ with setal line laterally, Gt₄ and Gt₅ with complete line of setae across terga, Gt₆ with two lines of setae, and syntergum with line of setae between cerci; hypopygium apex extending to about 0.55 times length of gaster.

Allotype male. Length: 1.9 mm. Similar to female except as follows: antenna (Fig. 8) with ventral surface of pedicel and flagellum yellow, scape extending to anterior ocellus, and mps sparser, separated by at least twice width of sensillum; head width : height : length, 7.8:6.2:3.4; eye height : eye width : length of malar space : width of oral fossa, 3.5:2.8:1.9:4.1; OOL : LOL : POL : maximum diameter of anterior ocellus, 1.0:1.0:2.3:0.6; minimum distance between eyes dorsally, 4.9; combined length of pedicel and flagellum about 0.85 times head width; propodeum distinctly sculptured medially between spiracles but median area less distinctly differentiated by shallower plical furrows (Fig. 17); forewing (Fig. 31) with speculum distinct only to about middle of marginal vein, relative length of costal cell : marginal vein : stigmal vein : postmarginal vein = 6.8:3.5:2.7:3.8, the marginal vein conspicuously thickened, slightly convex with posterior margin very slightly curved, about 5 times as long as greatest width, and yellow similar to rest of venation; legs with tibiae yellowish white; gaster more extensively brown dorsally, about 1.75 times as long as wide and about 1.2 times as long as mesosoma.

Variation

The primary types appear to be air-dried; critical-point-dried specimens can have the gaster inflated so that in females it is more lanceolate and longer, up to about 1.5 times as long as wide and 1.3 times as long as the mesosoma. Intensity of colour can vary such that females sometimes have the tibiae entirely yellow and other times extensively dark with a

slight metallic luster medially, and both sexes sometimes have darker venation, brown in males. The costal setal line may or may not be distinctly interrupted medially, but at least the setae are always conspicuously more widely spaced medially. None of the females have setae on the dorsal surface of the basal fold (Fig. 30), though sometimes there is a single seta on the ventral surface near the parastigma. Males have up to 3 setae on or near the basal fold, comprising some combination of 1–3 setae on the dorsal surface and 1–3 setae on the ventral surface of the wing (Fig. 31). Males also sometimes do not have the ventral line of costal setae distinctly interrupted medially.

Differentiation

Mesopolobus moryoides is assigned to the subgenus *Xenocrepsis*, which is differentiated from other recognized subgenera of *Mesopolobus* primarily by the absence of a pronotal carina (Figs. 10, 14) and the head being comparatively thin in lateral view (Fig. 10), as described in the key by Bouček and Rasplus (1991). It is the fourth species to be classified in *M.* (*Xenocrepsis*), along with *M. morys*, *M. incultus* (Walker, 1834), and *M. trasullus* (Walker, 1839).

Gibson and Baur (2005) provided features to differentiate the latter two species after resurrecting *M. trasullus* from synonymy with *M. incultus* and treating it as the senior synonym of *M. rosei* Graham (1984). Females of *M. moryoides* are most similar to those of *M. trasullus* because they share a strigose clypeus (Fig. 11) and a dark tegula and have the ventral line of costal setae interrupted medially, or at least the setae are somewhat more widely spaced medially. Females of *M. morys* and *M. incultus* differ from the other two species in having a reticulate clypeus (Fig. 12), the tegula yellow over at least the basal two thirds, and an evenly spaced line of ventral costal setae. Sculpture of the propodeum most readily differentiates females of *M. moryoides* from those of *M. trasullus*. The latter have the propodeum quite smooth and shiny with an indistinct median area because of the absence of plical carinae or furrows (Fig. 16), whereas females of *M. moryoides* (Fig. 15) have a distinctly delineated and sculptured median propodeal area, the propodeum being more similar to that of *M. morys* females. Females of *M. trasullus* also have at least two and often several setae on the

dorsal surface of the basal fold (*cf.* Fig. 32), and a longer and more distinctly lanceolate gaster and a shorter pedicel than *M. moryoides* females. Males of *M. moryoides* are superficially most similar to *M. morys* males because of their expanded marginal vein (*cf.* Figs. 31, 32). It is because of this distinctive venational feature, previously thought to be unique to males of *M. morys* within *Mesopolobus*, that the species reared from *C. obstrictus* in North America was misidentified previously. Males of *M. moryoides* are readily separated from those of *M. morys* by their entirely dark tegula and dark palpi, largely dark femora, and strigose clypeus.

Hosts and biology

Mesopolobus moryoides is a solitary ectoparasitoid of *C. obstrictus* and possibly other *Ceutorhynchus* species, as indicated by the record from Illinois, from where *C. obstrictus* is not yet recorded.

Distribution

Known only from North America.

Remarks

Only a single male and female of *M. moryoides* were found among 1124 voucher specimens of chalcids reared over 3 years from canola seedpods by Buntin (1998). His study verifies the presence of *M. moryoides* in Georgia but indicates that this species is a much rarer parasitoid of *C. obstrictus* in the southeastern United States than in the northwestern United States and western Canada. Specimens collected in Illinois suggest that the species has a much wider distribution than presently documented by collection records.

Because *M. moryoides* is known only from North America, it may be a native species that expanded its host range to include *C. obstrictus* after this species was introduced. If so, its native host is likely noneconomic and comparatively rare because we have not seen *M. moryoides* in any collection made prior to its being reared from *C. obstrictus* almost immediately after this species was discovered in Washington (Baker 1936). The timing and host association suggest the alternative possibility that *M. moryoides* is an introduced species from Europe. If so, it likely remains unrecognized in Europe within *M. morys* because of the similarly enlarged marginal vein of males, and

probably is quite rare or has a very restricted distribution.

***Trichomalus lucidus* (Walker)**

(Figs. 18–21, 23, 25, 26, 33, 35)

Pteromalus lucidus Walker, 1835: 484. Lectotype ♀ (BMNH, examined) designated by Graham 1956: 248.

Pteromalus brevicornis Walker, 1835: 491. Lectotype ♀ (BMNH) designated by Graham 1956: 248; synonymy by Graham 1956: 248.

Pteromalus chalceus Walker, 1835: 491. Lectotype ♀ (BMNH) designated by Graham 1956: 248; synonymy by Graham 1956: 248.

Pteromalus despectus Walker, 1835: 491. Lectotype ♀ (BMNH) designated by Graham 1956: 248; synonymy by Graham 1956: 248.

Pteromalus rusticus Walker, 1836: 482. Syntype ♀ (BMNH); synonymy by Graham 1956: 248.

Pteromalus mundus Förster, 1841: 12. Lectotype ♀ (NMWA) designated by Graham 1969: 726; synonymy by Delucchi and Graham 1956: 572.

Pteromalus lyttus Walker, 1848: 194. Lectotype ♀ (BMNH) designated by Graham 1956: 248; synonymy by Graham 1956: 248.

Isocyrtus (Trichomalus) fasciatus Thomson, 1878: 139. Lectotype ♀ (MZLU) designated by Graham 1969: 726; synonymy by Graham 1956: 248.

Pteromalus purus Dalla Torre, 1898: 144. Replacement name for *P. mundus* Förster, 1841, preoccupied by *P. mundus* Walker, 1836.

Trichomalus fasciatus Breakey *et al.* 1944: 118; Doucette 1944: 124; Doucette 1948: 764, 765; Hanson *et al.* 1948: 14, 15; Baird 1949: 276, 278; Carlson *et al.* 1950: 390; Carlson *et al.* 1951: 964; McLeod 1951: 35; Crowell 1952: 546; McLeod 1953: 13–16; Walz 1957: 219; McLeod 1962: 6.

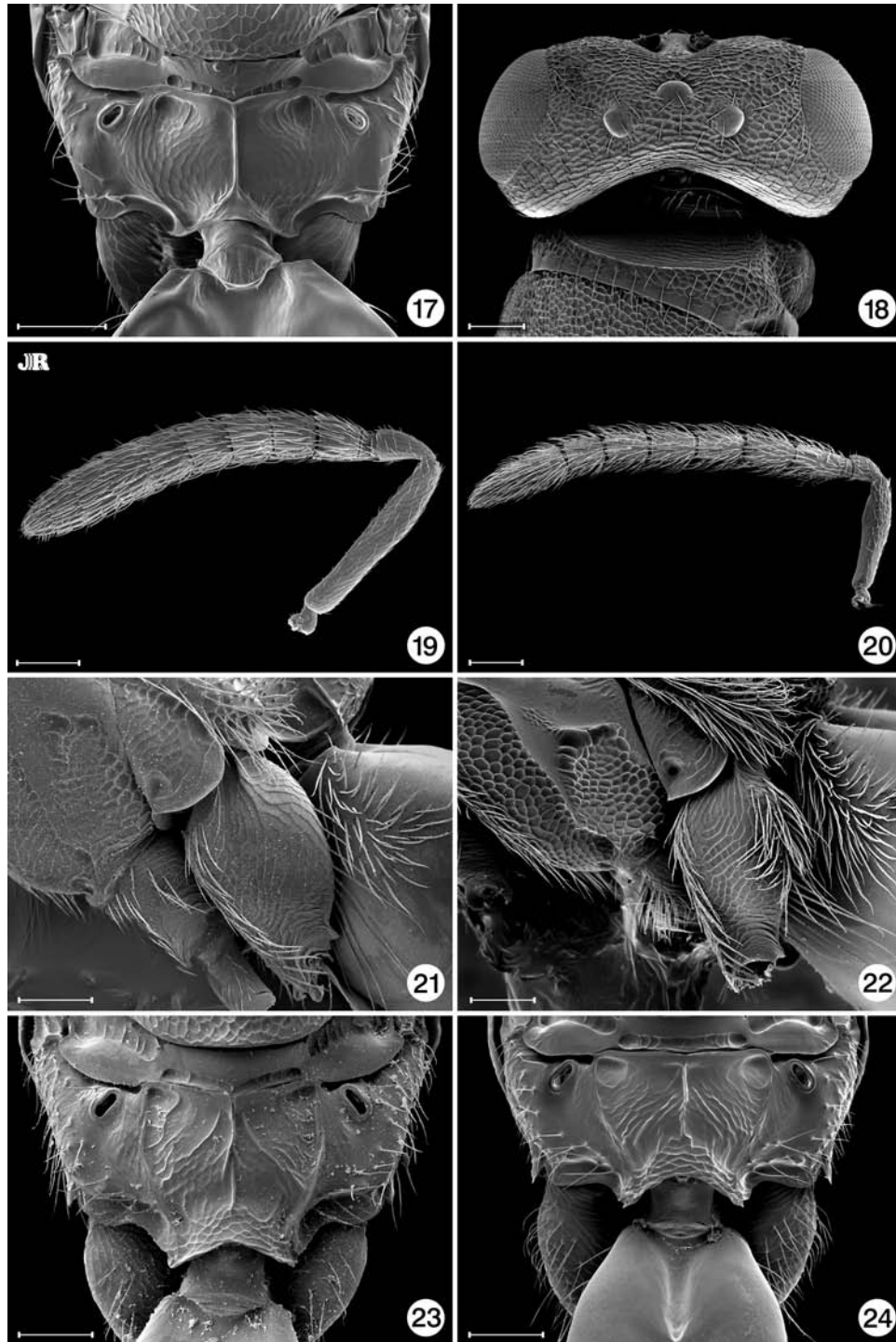
Trichomalus perfectus Peck 1963: 669; Murchie and Williams 1998: 164; Cárcamo *et al.* 2001: 205; Kuhlmann *et al.* 2002: 55.

Material examined

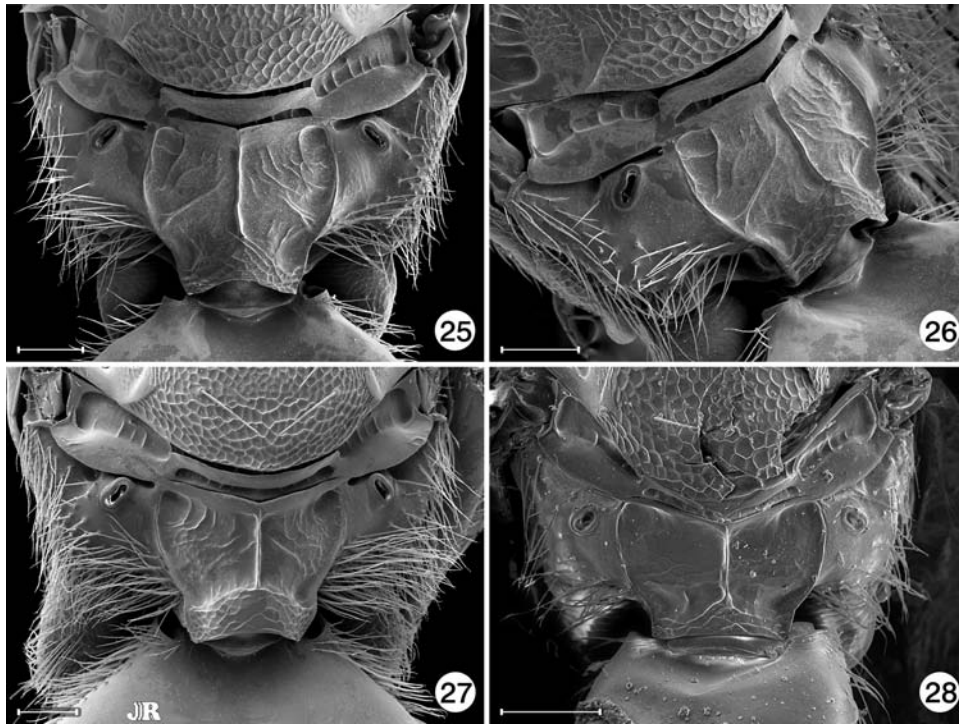
CANADA. British Columbia: Agassiz, 22.vii.1939, *ex. C. obstrictus*, RG (2 ♀, 3 ♂). Chilliwack, em. 3.ix.1943, *ex. C. obstrictus* (2 ♀). Creston, 17.vi.2001, canola sweep sample, AF (3 ♀, 1 ♂). Dewdney, 27.vi.1934 (1 ♀; 2 ♀, USNM), 22.vii.1939 (43 ♀, 5 ♂), *ex. C. obstrictus*, RG. Fraser valley, vi.1951, *ex.*

C. obstrictus, HP turnip, JM (29 ♀, 28 ♂). Ladner, 14.vii.1949, em. 13.viii.1949, RB (1 ♀), 29.vii.1953, em. 3–24.viii.1953, JM (2 ♀, 3 ♂), *ex. C. obstrictus*; 29.vii.1953, *ex. C. obstrictus*, HP Brassica, JM (3 ♂). Nicomen Island, 3.viii.1951, *ex. C. obstrictus*, HP wild mustard, GY (2 ♂). Sardis, 26.vii.1949, *ex. C. obstrictus*, HP Brassica, RB (1 ♀, 1 ♂). Vancouver, 23.viii.1951, em. 29.viii.1951, *ex. C. obstrictus* (3 ♂); University of British Columbia, 11.vii.1950, em. 24.vii.1950 (1 ♂), 17.vii.1949, em. 19.viii.1949, RB (1 ♀, 2 ♂), *ex. C. obstrictus*, HP Brassica. Vancouver Island, 2.viii.1949, em. 19–29.viii.1949 (2 ♀), 10.vii.1951, em. 23.viii.1951 (1 ♀). **Alberta:** Bow Island, *ca.* 8 km SE, em. *ca.* 18.vii.2003, *ex. B. rapa* pods, U&D (2 ♂). Coaldale, *ca.* 1 km NE, 49°44.92N, 112°30.50W, 16–30.vii.2002, em. *ca.* 1.viii.2002, *ex. B. napus* pods, U&D (5 ♀, 3 ♂). Lethbridge, 4.vi.2001, canola sweep sample, AF (1 ♀); *ca.* 4 km SW, em. *ca.* 12.viii.2003, *ex. B. napus* pods, U&D (10 ♀, 10 ♂). **UNITED STATES. Idaho:** Clearwater Co.: Lenore, vii.1947, *C. obstrictus* in rape seedpods, CFD (2 ♀, 1 ♂); 7.vi.1948, *ex. C. obstrictus* in rape seedpods, AJW (1 ♀, 1 ♂); 7.vi.1948, 1000 ft., AJW (5 ♀, WFBM). Latah Co.: Potlach, 2 mi. NW, 23, 25, 30, and 31.vii.1979, DJS (5 ♀, 2 ♂, WFBM). Troy, 3 mi. NE, 23 and 30.vii.1979, DJS (5 ♀, 1 ♂, WFBM). Nez Perce Co.: Gifford, 11.vi.1949, 2900 ft., *ex. C. obstrictus*, AJW (18 ♀, 8 ♂, WFBM). **Oregon:** Benton Co.: Corvallis, 10.vii.1951, *ex. C. obstrictus*, H.H. Crowell (1 ♀, 1 ♂); 6, 10, 13, 16, and 23.vii.1951, *ex. weevil grub* on turnip and cabbage, H.H. Crowell (10 ♀, 4 ♂, OSAC). Marion Co.: Salem, 8 mi. E, 20.vi.1968, *ex. Brassicaceae* (9 ♀, 2 ♂, OSAC). **Washington:** Pierce Co.: Sumner, from pupae in seedpods (1 ♀); 22.vii.1943, *ex. C. obstrictus* larva in rutabaga seedpods, CFD (6 ♀, 1 ♂); vii.1944, rutabaga pods, CFD (1 ♀, 9 ♂); vii.1945, em. pods *B. campestris*, CFD (6 ♀); 17.vi.1946, pods crucifers, CFD (6 ♀); vii.1947, *ex. C. obstrictus* on cabbage, CFD (1 ♀); vii.1947, CFD (43 ♀, 11 ♂). Skagit Co.: Mount Vernon, 3.vii.1936, *ex. C. obstrictus*, AJH (12 ♀), reared 3.vii.1937, *ex. C. obstrictus* in turnip pod, AJH (17 ♀, 21 ♂; 2 ♀, 2 ♂, MTJP); 18.x.1943, in cabbage pods, ECC (3 ♀, 4 ♂, MTJP); 3 mi. S, 19.iv.1946, on turnip, ECC (3 ♀, UCDC). Sweeping cabbage seed stalks, 15.vii.1943, 30.vi.1944, ECC (2 ♀, UCDC). Snohomish Co.: Stanwood, sweeping

Figs. 17–24. 17, *Mesopolobus moryoides*, ♂ propodeum (dorsal). 18–20, *Trichomalus lucidus*: 18, ♀ head and pronotum (dorsal); 19, ♀ antenna; 20, ♂ antenna. 21 and 22, ♀ metacoxa (lateral): 21, *T. lucidus*; 22, *Trichomalus perfectus*. 23 and 24, ♂ propodeum and metacoxa (dorsal): 23, *T. lucidus*; 24, *T. perfectus*. Scale bars = 100 µm.



Figs. 25–28. ♀ propodeum: 25, *Trichomalus lucidus* (dorsal); 26, *T. lucidus* (oblique view); 27, *Trichomalus perfectus* (dorsal); 28, *Trichomalus bracteatus* (dorsal). Scale bars = 100 µm.



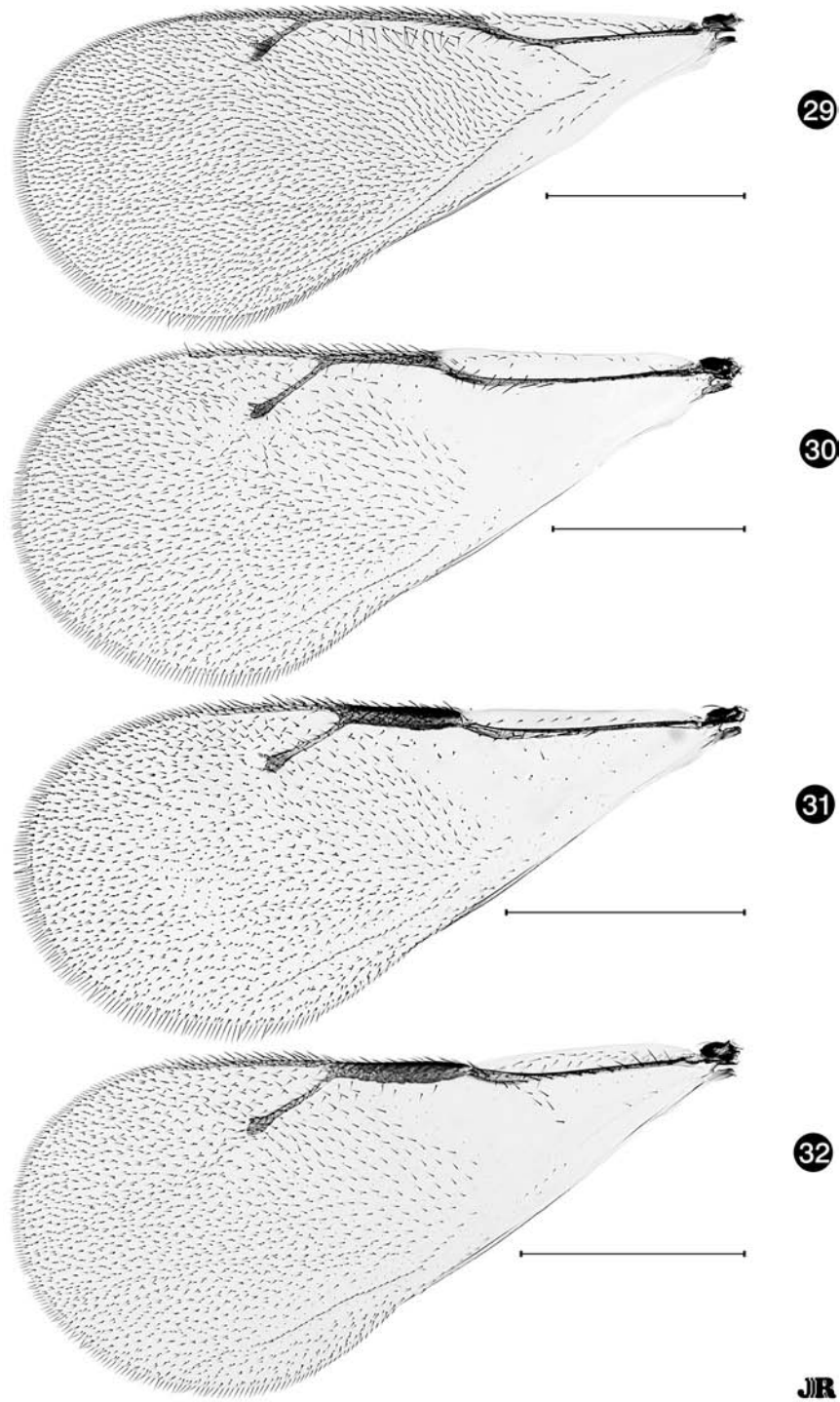
cabbage seed stalks and rye, 17.vii.1944, ECC (1 ♀, UCDC).

Diagnosis (based on North American specimens)

Female: head and body metallic green with tegula and scape yellow except scape sometimes dark apically; legs beyond coxae with apical tarsal segments dark, but otherwise more or less yellow to orange, with femora sometimes partly brown to dark brown or with some metallic luster and tibiae rarely light brown, but then at least knees and tibiae apically lighter yellow to white. Head in dorsal view about 2.1–2.25 times as wide as long (Fig. 18). Antenna (Fig. 19) with flagellum distinctly wider than apical width of pedicel; funicular segments with single row of dense mps. Forewing (Fig. 33) with marginal vein about 1.65–1.8 times as long as stigmal vein; basal cell usually bare but at most with 1 or 2 setae very near basal fold, the basal fold with at least 1 and usually 4–9 setae, and mediocubital fold usually without or with 1, rarely 2 setae, but with a combined maximum total of 11 setae. Legs with metacoxa comparatively sparsely setose dorsally (Fig. 21). Propodeum (Figs. 25, 26) with plical

region about 1.2–1.4 times as wide as medial length of propodeum, delineated by strong, complete plical carinae, with median carina, and usually with more or less complete oblique costula medially; callus dorsally with more or less triangular bare region extending posteriorly to nucha lateral to plical carina (Fig. 25), the setal tubercles of setose region visible only laterally or extending from side and attenuating to point near intersection of plical carina and nucha (Figs. 25, 26); nucha weakly reticulate. Gaster about 1.75 times as long as wide; subequal in length to, or in air-dried specimens even slightly shorter than, combined length of head and mesosoma. **Male:** similar to female except scape and legs beyond coxae entirely yellow, gaster with subbasal yellow spot; flagellum (Fig. 20) filiform with sparse mps in single row over about apical half of all but apical segment, and with first funicular segment conspicuously longer than pedicel and at least equal in length to second funicular segment; forewing (Fig. 35) with marginal vein about 1.55–1.9 times length of stigmal vein, basal cell sometimes with 1 or 2 setae within cell apically and often closed posteroapically by up to 3 setae, and basal fold with 4–8 setae on dorsal

Figs. 29–32. Forewing: 29, *Necremnus tidius*, ♀; 30, *Mesopolobus moryoides*, ♀; 31, *M. moryoides*, ♂; 32, *Mesopolobus morys*, ♂. Scale bars = 0.5 mm.



surface and 1 or 2 setae on ventral surface toward parastigma; propodeum (Fig. 23) almost half as long as scutellum, with nucha weakly aciculate.

Recognition

Trichomalus lucidus is distinguished from *T. perfectus* by three principal differences. Although metacoxal setation is somewhat variable and Figures 21 and 22 illustrate opposite extremes for females of the two species, the metacoxae are less densely setose dorsally in both sexes of *T. lucidus* (Figs. 21, 23) than they are in *T. perfectus* (Figs. 22, 24). Both sexes of *T. lucidus* also have a longer marginal vein relative to the stigmal vein than does *T. perfectus*. Based on North American specimens of *T. lucidus*, females have the marginal vein about 1.65–1.85 times the length of the stigmal vein (Fig. 33), compared with about 1.4–1.6 times for *T. perfectus* (Fig. 34). Males of *T. lucidus* have the marginal vein about 1.55–1.9 times the length of the stigmal vein (Fig. 35), compared with about 1.3–1.45 times for *T. perfectus* (Fig. 36). Females of the two species also have a different propodeal setal pattern lateral to the plical carina. In *T. perfectus*, there is a more or less quadrate bare region anteriorly and a transverse setose region posteriorly (Fig. 27), with the setae originating from distinct tubercles that extend in a broad band over the callus to the plical carina distinctly anterior to the nucha. Females of *T. lucidus* have a more triangular bare region because it extends along the plical carina to the nucha (Fig. 25) or, if the setae extend somewhat anterior to the nucha, then the setal tubercles are visible only laterally or attenuate to a point near the intersection of the plical carina and nucha (Fig. 26). The difference in setal pattern is not so conspicuous for males of the two species (Figs. 23, 24). Females of both *T. lucidus* and *T. perfectus* have a comparatively long propodeum (Figs. 25, 27), which differentiates them from females of *Trichomalus bracteatus* (Walker, 1835) (Fig. 28).

Hosts and biology

Trichomalus lucidus is a solitary larval ectoparasitoid. In North America it has been reared only from *C. obstrictus*. In Europe, Kuhlmann *et al.* (2000) reared it from the larvae of *Ceutorhynchus pallidactylus* (Marsham, 1802) on cabbage, *Brassica oleracea* L., in

Switzerland and from *C. alliariae* in the stems of garlic mustard, *Alliaria petiolata* (Bieb.) Cavara & Grande (Brassicaceae), in northern Germany. Garlic mustard was introduced from Europe to eastern North America before 1900 and now extends to the west coast. Klander (2001) reported that *T. lucidus* comprised 8% of the ectoparasitoids reared from *C. obstrictus* on canola in northern Germany and that it parasitized *C. alliariae* and *C. roberti* on garlic mustard. Muller *et al.* (2003) also reported it as a parasitoid of the latter two *Ceutorhynchus* hosts in surveys conducted in Switzerland in 2001, and from *Ceutorhynchus scrobicollis* Nerensheimer *et* Wagner, 1924 on garlic mustard in Germany, but not from *C. obstrictus* on canola in Germany. Muller *et al.* (2004) also did not recover it as a parasitoid of *C. obstrictus* in 2002 surveys in either Germany or Switzerland, though they did recover it in Germany from *C. alliariae* and *C. roberti* on garlic mustard and from *Microplontus rugulosus* (Herbst, 1795) (Curculionidae) on German chamomile, *Matricaria recutita* L., and scentless chamomile, *Tripleurospermum perforatum* (Merat) (Asteraceae).

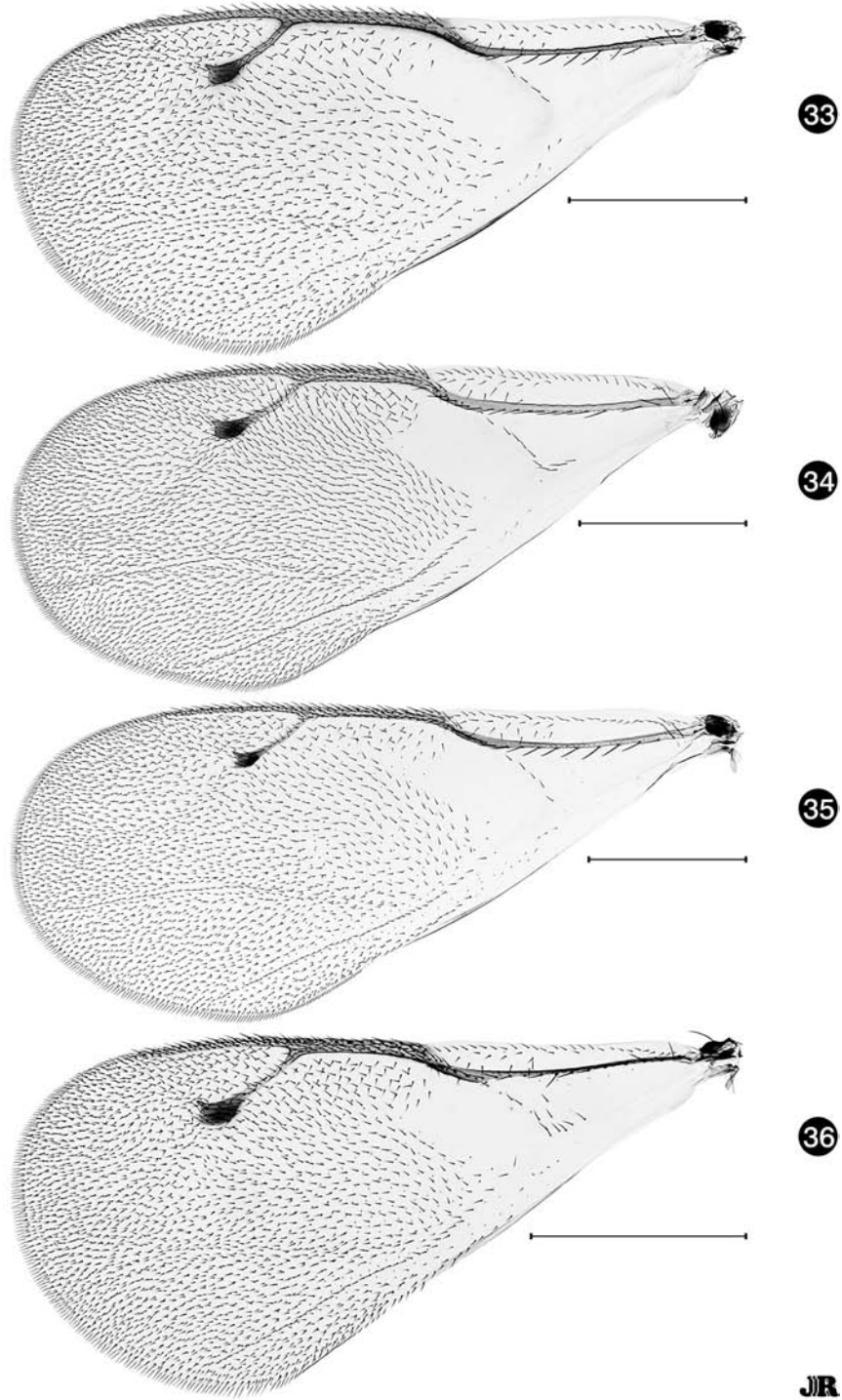
Distribution

Palaearctic: Germany, Ireland, Spain, Sweden, Switzerland, United Kingdom (England, Scotland) (Noyes 2002). **Nearctic:** see Material examined; the records from Alberta represent a new provincial record. Carlson *et al.* (1951) also reported a single female from California (San Joaquin Co., Thornton area), which was not located.

Remarks

The earliest identifications of this species in North America as *T. fasciatus* (Thomson, 1878) (*nec* Förster, 1841) were made by A.B. Gahan of the USNM, as first acknowledged in Hanson *et al.* (1948). Although Graham (1956) later synonymized *T. fasciatus* with *T. lucidus*, Gahan's original identification has proven correct relative to more recent identifications of the species as *T. perfectus*. The accuracy of Gahan's identification is quite remarkable because at the time both the European and the Nearctic species of *Trichomalus* were unrevised, without keys to species. Gahan's ability to correctly identify the species apparently resulted from a 1927 trip to major European museums to study type material (Cory and

Figs. 33–36. Forewing: 33, *Trichomalus lucidus*, ♀; 34, *Trichomalus perfectus*, ♀; 35, *T. lucidus*, ♂; 36, *T. perfectus*, ♂. Scale bars = 0.5 mm.



Muesebeck 1960), at which time he obtained for the USNM authoritatively identified specimens of some European species from the Gustav Mayr collection in Vienna, Austria. A single female from the Mayr collection bearing the label "*Trichomalus fasciatus* Th." is present in the USNM and it is likely that Gahan's identification was based on comparison of reared specimens with this female.

Buntin (1998) stated that *T. perfectus* represented 96%–100% of all parasitoids reared from canola seedpods infested with *C. obstrictus* near Griffon, Georgia, during 1994–1996; however, no *Trichomalus* species were found among 1124 voucher specimens (UGCA). The vast majority of specimens consist of *Lycrus maculatus* (Gahan), which was recorded previously as a parasitoid of *C. obstrictus* in California (Carlson *et al.* 1951), Idaho (Walz 1957), and Washington (Hanson *et al.* 1948) under the generic names *Trimeromicrus* or *Zatropis*, both of which are now considered synonyms of *Lycrus* (see Bouček 1993).

There is no evidence of *T. lucidus* in North America prior to the introduction of *C. obstrictus*, just as for *M. moryoides*. However, unlike *M. moryoides*, there is no conspicuous feature that distinguishes either sex of *T. lucidus* from other *Trichomalus* species. The Nearctic species remain unrevised and it is possible that specimens of *T. lucidus* collected prior to 1936 exist in collections. Although Delucchi and Graham (1956) suggested that literature records referring to *T. fasciatus* as a parasitoid of *C. obstrictus* were probably all based on misidentifications of *T. perfectus*, the rearings of Klander (2001) show that this is not necessarily true for Europe as well as for North America.

Discussion

Because of misidentifications, for over 60 years it was thought that the two principal biological control agents of the cabbage seedpod weevil in Europe, *T. perfectus* and *M. morys*, were present in North America and that they had been introduced with *C. obstrictus*. Our study disproves the first assumption and brings into question the second. *Trichomalus perfectus* and *M. morys*, in addition to *Stenomalina gracilis* (Walker, 1834) (Pteromalidae), are the most common and widespread chalcid biological control agents of

C. obstrictus in Europe (Murchie and Williams 1998; Williams 2003). The relative importance of the three species sometimes differs between localities and plant hosts surveyed in Europe, but it seems likely that at least one of the three species would have been introduced if parasitoids were introduced along with *C. obstrictus*. Although *T. lucidus* and *N. tidius* have both been reported as parasitoids of *C. obstrictus* in Europe, these records are very few. Furthermore, if *M. moryoides* is European in origin, then it must have a restricted distribution or be uncommon and thus not as likely to have been introduced as *M. morys*. Yet the fact remains that *M. moryoides* and *T. lucidus* are not known from North America prior to being reared from *C. obstrictus* soon after the introduction of this pest.

There are several possible explanations for what appears to be a major discrepancy between the principal chalcid species that parasitize *C. obstrictus* in Europe and those in North America. It could be that *N. tidius*, *T. lucidus*, and *M. moryoides* were all present in western North America on one or more noneconomic hosts prior to the introduction of *C. obstrictus* and expanded their host ranges to include this species once it became available; one or more of the species may be naturally occurring Holarctic species. This is unknown at present because *Mesopolobus* and *Trichomalus* are unrevised and *Necremnus* has not been revised comprehensively for North America. Alternatively, at least *N. tidius* and *T. lucidus* may have been introduced accidentally to North America prior to *C. obstrictus* along with some other ceutorhynchine host on some non-*Brassica* host plant. This latter hypothesis is supported by collection records of *N. tidius* in Idaho prior to the known introduction of *C. obstrictus* and by rearings of both *N. tidius* and *T. lucidus* in Europe from ceutorhynchine hosts on plants that were introduced to North America before *C. obstrictus*. *Necremnus tidius* was reared from *C. typhae* on shepherd's purse, whereas *T. lucidus* has been reared from *C. alliariae*, *C. roberti*, and *C. scrobicollis* on garlic mustard and from *M. rugulosus* on German chamomile and scentless chamomile (Kuhlmann *et al.* 2001; Muller *et al.* 2003). All of these plants were introduced to North America before *C. obstrictus* and may have been introduced along with some ceutorhynchine weevil and its parasitoids. It also remains possible that the complex of principal North American chalcid

parasitoids differs from that indicated in the literature for Europe because different parasitoid complexes occur on different host plants or in different regions in Europe. For example, Kuhlmann *et al.* (2000) reported both *S. gracilis* and *T. lucidus* from *C. obstrictus* larvae reared from cabbage in Switzerland, but only *S. gracilis* from larvae reared from canola in Switzerland (Muller *et al.* 2004) and Germany (Kuhlmann *et al.* 2000). In contrast, Klander (2001) reported that 8% of the ectoparasitoids of *C. obstrictus* in canola in northern Germany were *T. lucidus*, compared with 75% *T. perfectus*, 8% *M. morys*, and 5% *S. gracilis*. The exact area in Europe from where *C. obstrictus* was introduced, and thus the prevalent parasitoid complex that might also have been introduced, remains unknown. It also seems very likely that *C. obstrictus* was introduced in cabbage or some other cole crop rather than in rape because the latter was not grown extensively in North America when the weevil was first discovered. However, most recent literature concerning parasitoids of *C. obstrictus* in Europe is based on rearings from rape and canola. A final major question that remains to be answered is the area of origin of *M. moryoides* — Nearctic or Palearctic. Answering these questions will require extensive host–parasitoid surveys of host weevils other than *C. obstrictus* and host plants other than canola in both western North America and Europe. It will also require comprehensive systematic revisions of relevant parasitoid genera, including analysis of genetic similarity between European and North American populations of *N. tidius* and *T. lucidus*, respectively, to investigate the possibility of sibling species.

Acknowledgements

We thank K. Bolte (Canadian Forest Service, Ottawa, Ontario) for the photographs of the forewings and J. Read (Agriculture and Agri-Food Canada, Ottawa) for scanning electron microscopy and preparation of all plates of illustrations. We also gratefully acknowledge J. Noyes and S. Ryder (BMNH) and E. Grissell and M. Gates (USNM) for assistance during museum visits and the loan of material, as well as the following individuals for the loan of material on which this study was based: D. Buntin (UGCA), C. Hansson and R. Danielsson (MZLU), J. Leathers and S. Arnold (OSAC,

WFIC), J. McCaffrey and F. Merickel (WFBM), R. Zack (MTJP), S. Heydon (UCDC), and A. Ferguson and I. Williams (Institute of Arable Crops Research, Rothamsted, United Kingdom). The Alberta Agricultural Research Institute is also gratefully acknowledged for financial support of the junior authors.

References

- Baker, Wm. W. 1936. Notes on a European weevil, *Ceutorhynchus assimilis* Payk., recently found in the state of Washington. *The Canadian Entomologist*, **68**: 191–193.
- Baird, A.B. 1949. *The Canadian Insect Pest Review*, **27**: 268–288.
- Bouček, Z. 1959. A study of central European Eulophidae. I. Eulophinae (Hymenoptera). *Sborník Entomologického Oddelení Národního Musea v Praze*, **33**: 117–170.
- Bouček, Z. 1993. New taxa of North American Pteromalidae and Tetracampidae (Hymenoptera), with notes. *Journal of Natural History*, **27**: 1239–1313.
- Bouček, Z., and Askew, R.R. 1968. Index of entomophagous insects. Palearctic Eulophidae (excl. Tetrastichinae). (Hym. Chalcidoidea). Le François, Paris.
- Bouček, Z., and Heydon, S.L. 1997. Chapter 17. Pteromalidae. In *Annotated keys to the genera of Nearctic Chalcidoidea* (Hymenoptera). Edited by G.A.P. Gibson, J.T. Huber, and J.B. Woolley. NRC Research Press, Ottawa, Ontario. pp. 541–692.
- Bouček, Z., and Rasplus, J.-Y. 1991. Illustrated key to West-Palaearctic genera of Pteromalidae (Hymenoptera: Chalcidoidea). Institut National de la Recherche Agronomique, Paris.
- Breakey, E.P., Webster, R.L., and Carlson, E.C. 1944. The cabbage seed pod weevil, *Ceutorhynchus assimilis*, in western Washington. Western Washington Experiment Station. *Entomology. Bulletin of the Washington Agricultural Experiment Station*, **455**: 118–119.
- Brodeur, J., Leclerc, L.-A., Fournier, M., and Roy, M. 2001. Cabbage seedpod weevil (Coleoptera: Curculionidae): new pest of canola in northeastern North America. *The Canadian Entomologist*, **133**: 709–711.
- Buntin, G.D. 1998. Cabbage seedpod weevil (*Ceutorhynchus assimilis*, Paykull) management by trap cropping and its effect on parasitism by *Trichomalus perfectus* (Walker) in oilseed rape. *Crop Protection*, **17**: 299–305.
- Buntin, G.D., McCaffrey, J.P., Raymer, P.L., and Romero, J. 1995. Quality and germination of rapeseed and canola seed damaged by adult cabbage seedpod weevil, *Ceutorhynchus assimilis*

- (Paykull) [Coleoptera: Curculionidae]. Canadian Journal of Plant Science, **75**: 539–541.
- Burks, B.D. 1979. Family Pteromalidae. In Catalog of Hymenoptera in America north of Mexico. Vol. I. Edited by K.V. Krombein, P.D. Hurd, D.R. Smith, and B.D. Burks. Smithsonian Institution Press, Washington, District of Columbia. pp. 768–835.
- Cárcamo, H.A., Dossall, L., Dolinski, M., Olfert, O., and Byers, J.R. 2001. The cabbage seedpod weevil, *Ceutorhynchus obstrictus* (Coleoptera: Curculionidae) — a review. Journal of the Entomological Society of British Columbia, **98**: 201–210.
- Carlson, E.C., Lange, W.H., Jr., and Sclaroni, R.H. 1950. Brussels sprouts seed loss in California caused by the cabbage seedpod weevil. Journal of Economic Entomology, **43**: 389–390.
- Carlson, E.C., Lange, W.H., Jr., and Sclaroni, R.H. 1951. Distribution and control of the cabbage seedpod weevil in California. Journal of Economic Entomology, **44**: 958–966.
- Colonnelli, E. 1998. Systematic and synonymic notes on Ceutorhynchinae, with lectotype and neotype designations, and descriptions of three new genera (Coleoptera, Curculionidae). Fragmenta Entomologica, **30**: 105–175.
- Cory, E.N., and Muesebeck, C.F.W. 1960. Arthur Burton Gahan 1880–1960. Proceedings of the Entomological Society of Washington, **62**: 198–204.
- Crowell, H.H. 1952. Cabbage seedpod weevil control with Parathion. Journal of Economic Entomology, **45**: 545–546.
- Dalla Torre, K.W. von. 1898. Catalogus Hymenopterorum hucusque descriptorum systematicus et synonymicus. V. Chalcididae et Proctotrupidae. Lepzig.
- Delucchi, V., and Graham, M.W.R. de V. 1956. La révision du genre *Trichomalus* Thomson (1878) (Chalcidoidea: Pteromalidae). Beiträge zur Entomologie, **6**: 543–576.
- Dossall, L.M., Moisey, D., Cárcamo, H., and Dunn, R. 2001. Cabbage seedpod weevil factsheet. Agdex 622-21, Alberta Agriculture, Food and Rural Development, Edmonton, Alberta.
- Doucette, C.F. 1948. Field parasitization and larval mortality of the cabbage seedpod weevil. Journal of Economic Entomology, **41**: 765–767.
- Doucette, C.F. 1944. The cabbage seedpod weevil, *Ceutorhynchus assimilis* (Payk). Western Washington Experiment Station. Entomology. Bulletin of the Washington Agricultural Experiment Station, **455**: 123–125.
- Förster, A. 1841. Beiträge zur monographie der Pteromalinen Nees 1 Heft. Aachen.
- Frankton, C., and Mulligan, G.A. 1971. Weeds of Canada. Publication 948, Canada Department of Agriculture, Ottawa, Ontario.
- Gahan, A.B. 1941. A revision of the parasitic wasps of the genus *Necremnus* Thomson (Eulophidae; Hymenoptera). Journal of the Washington Academy of Sciences, **31**: 196–203.
- Gibson, G.A.P. 1995. Parasitic wasps of the subfamily Eupelminae: classification and revision of world genera (Hymenoptera: Chalcidoidea, Eupelmidae). Memoirs on Entomology International, **5**: 1–421.
- Gibson, G.A.P. 1997. Chapter 2. Morphology and terminology. In Annotated keys to the genera of Nearctic Chalcidoidea (Hymenoptera). Edited by G.A.P. Gibson, J.T. Huber, and J.B. Woolley. NRC Research Press, Ottawa, Ontario. pp. 16–44.
- Gibson, G.A.P. 2003. Phylogenetics and classification of Cleonyminae (Hymenoptera: Chalcidoidea: Pteromalidae). Memoirs on Entomology International, **16**: 1–339.
- Gibson, G.A.P., and Baur, H. 2005. *Mesopolobus trasullus* (Walker, 1839), a valid species and senior synonym of *Mesopolobus roseni* Graham, 1984. Entomologist's Gazette, **56**: 129–132.
- Gomez, J.M., and Zamora, R. 1994. Top-down effects in a tritrophic system: parasitoids enhance plant fitness. Ecology, **75**: 1023–1030.
- Goureau, C.C. 1851. Mémoire pour servir à l'histoire des Diptères dont les larves minent les feuilles des plantes et à celle de leurs parasites. Annales de la Société Entomologique de France, **9**(2): 131–176, 3 plates.
- Graham, M.W.R. de V. 1956. A revision of the Walker types of Pteromalidae (Hym., Chalcidoidea). Part 2 (including descriptions of new species). Entomologist's Monthly Magazine, **92**: 246–263.
- Graham, M.W.R. de V. 1957. A revision of the Walker types of Pteromalidae (Hym., Chalcidoidea). Part 3 (including descriptions of new species). Entomologist's Monthly Magazine, **93**: 217–236.
- Graham, M.W.R. de V. 1959. Keys to the British genera and species of Elachertinae, Eulophinae, Entedontinae, and Euderinae (Hym., Chalcidoidea). Transactions of the Society for British Entomology, **13**: 169–204.
- Graham, M.W.R. de V. 1963. Additions and corrections to the British list of Eulophidae (Hym., Chalcidoidea). Transactions of the Society for British Entomology, **15**(9): 167–275.
- Graham, M.W.R. de V. 1969. The Pteromalidae of north-western Europe (Hymenoptera: Chalcidoidea). Bulletin of the British Museum (Natural History) Entomology, **16**(Suppl.): 1–908.
- Graham, M.W.R. de V. 1984. New Chalcidoidea (Insecta: Hymenoptera) mainly from France, including several species of *Eurytoma* and *Pteromalus* associated with *Euphorbia*. Journal of Natural History, **18**: 495–520.
- Graham, M.W.R. de V. 1991. Type material in the University Museum, Oxford, of one Kirby and five Walker species of Eulophidae (Hym., Chalcidoidea) with new synonymy and designation of

- lectotypes. Entomologist's Monthly Magazine, **127**: 7–9.
- Hanson, A.J., Carlson, E.C., Breakey, E.P., and Webster, R.L. 1948. Biology of the cabbage seedpod weevil in northwestern Washington. State College of Washington Agricultural Experimental Station Bulletin, **498**: 1–15.
- Harmon, B.L., and McCaffrey, J.P. 1997. Parasitism of adult *Ceutorhynchus assimilis* (Coleoptera: Curculionidae) by *Microctonus melanopus* (Hymenoptera: Braconidae) in northern Idaho and eastern Washington. Journal of Agricultural Entomology, **14**: 55–59.
- Heymons, R. 1921. Mitteilungen über den Rapsrüßler, *Ceutorhynchus assimilis* Payk. und seinen Parasiten, *Trichomalus fasciatus* Thoms. Zeitschrift für Angewandte Entomologie, **8**: 93–111.
- Klander, B. 2001. Die Rüsselkäfer der Unterfamilie Ceutorhynchinae und deren Parasitoide auf Winterraps und begleitenden Unkräutern in Schleswig-Holstein. M.Sc. thesis, Christian-Albrechts-Universität, Kiel, Germany.
- Kuhlmann, U., Toepfer, S., Grossrieder, M., White, H., Klander, B., Reimer, L. et al. 2000. Summary report — progress in 2000. Agricultural pest research. CABI Bioscience Switzerland Centre, Delémont, Switzerland.
- Kuhlmann, U., Toepfer, S., Grossrieder, M., Zhang, F., Hunt, E., Hemachandra, K.S. et al. 2001. Summary report — progress in 2001. Agricultural pest research. CABI Bioscience Switzerland Centre, Delémont, Switzerland.
- Kuhlmann, U., Dossall, L.M., and Mason, P.G. 2002. 11. *Ceutorhynchus obstrictus* (Marsham), cabbage seedpod weevil (Coleoptera: Curculionidae). In Biological control programmes in Canada, 1981–2000. Edited by P.G. Mason and J.T. Huber. CABI Publishing, Wallingford, United Kingdom. pp. 52–58.
- Laborius, A. 1972. Untersuchungen über die Parasitierung des Kohlschotenrüßlers (*Ceutorhynchus assimilis* Payk.) und der Kohlschotengallmücke (*Dasyneura brassicae* Winn.) in Schleswig-Holstein. Zeitschrift für Angewandte Entomologie, **72**: 14–31.
- Mason, P.G., Baute, T., Olfert, O., and Roy, M. 2004 (2003). Cabbage seedpod weevil, *Ceutorhynchus obstrictus* (Marsham) (Coleoptera: Curculionidae) in Ontario and Quebec. Journal of the Entomological Society of Ontario, **134**: 107–113.
- McKenna, D. 1992. Study of the effects of insecticide management on the seedpod weevil (*Ceutorhynchus assimilis* Payk.) and its parasites. M.Sc. thesis, University of London, London.
- McLeod, J.H. 1951. Biological control investigations in British Columbia. Proceedings of the Entomological Society of British Columbia, **47**: 27–36.
- McLeod, J.H. 1953. Notes on the cabbage seedpod weevil, *Ceutorhynchus assimilis* (Payk.) (Coleoptera: Curculionidae), and its parasites. Proceedings of the Entomological Society of British Columbia, **49**: 11–18.
- McLeod, J.H. 1962. Part I. Biological control of pests of crops, fruit trees, ornamentals and weeds in Canada up to 1959. In A review of the biological control attempts against insects and weeds in Canada. Technical Communication No. 2, Commonwealth Institute of Biological Control, Trinidad. Commonwealth Agricultural Bureaux, Farnham Royal. pp. 1–33.
- Miczulski, B. 1968. Community studies on Hymenoptera found on *Brassica napus* L. Part VI. Chalcidoidea. Polskie Pismo Entomologiczne, **38**: 341–385. [Polish with English summary.]
- Muller, F., Garipey, T.D., and Kuhlmann, U. 2003. Biological control of cabbage seedpod weevil, *Ceutorhynchus obstrictus*. Annual report 2002–2003. CABI Bioscience Switzerland Centre, Delémont, Switzerland.
- Muller, F., Cuenot, E., and Kuhlmann, U. 2004. Cabbage seedpod weevil (*Ceutorhynchus obstrictus* Marsham). Annual report 2003–2004. CABI Bioscience Switzerland Centre, Delémont, Switzerland.
- Murchie, A.K., and Williams, I.H. 1998. A bibliography of the parasitoids of the cabbage seed weevil (*Ceutorhynchus assimilis* Payk.). IOBC/WPRS Bulletin, **21**(5): 163–169.
- Nasredlin, N. 1973. A study of the weevil complex on mustard with special reference to the seedpod weevil. Ph.D. thesis, University of London, London.
- Noyes, J.S. 2002. Interactive catalogue of world Chalcidoidea. 2nd ed. [CD-ROM]. Taxapad, Vancouver, British Columbia, and The Natural History Museum, London.
- Peck, O. 1963. A catalogue of the Nearctic Chalcidoidea (Insecta; Hymenoptera). The Canadian Entomologist, **30**(Suppl.): 1–1092.
- Ryan, R.B., Bousfield, W.E., Johanningmeier, C.W., Parsons, G.B., Schmitz, R.F., and Theroux, L.J. 1977. Releases of recently imported larch casebearer parasites for biological control in the western United States, including relocations of *Agathis pumila*. United States Forest Service Research Note PNW-290.
- Schauff, M.E., LaSalle, J., and Coote, L.D. 1997. Chapter 10. Eulophidae. In Annotated keys to the genera of Nearctic Chalcidoidea (Hymenoptera). Edited by G.A.P. Gibson, J.T. Huber, and J.B. Woolley. NRC Research Press, Ottawa, Ontario. pp. 327–429.
- Spaic, I. 1972. Prilog poznavanji parazita jelinog iglivcara *Argyresthia fundella* F.R. Acta Entomologica Jugoslavica, **8**: 99–103.
- Thomson, C.G. 1878. Hymenoptera Scandinaviae 5. Pteromalus (Svederus) continuatio. Lund.
- Walker, F. 1834. Monographia Chalciditum. Entomological Magazine, **2**: 340–369.

- Walker, F. 1835. Monographia Chalciditum. Entomological Magazine, **2**: 476–502.
- Walker, F. 1836. Monographia Chalciditum. Entomological Magazine, **3**: 465–496.
- Walker, F. 1839. Monographia Chalciditum 1. London.
- Walker, F. 1848. List of the specimens of Hymenopterous insects in the collection of the British Museum. E. Newman, London.
- Walz, A.J. 1957. Observations on the biologies of some hymenopterous parasites of the cabbage seedpod weevil in northern Idaho. Annals of the Entomological Society of America, **50**: 219–220.
- Warwick, S.I., Francis, A., and Mulligan, G.A. 2004. Brassicaceae of Canada [online]. Agriculture and Agri-Food Canada. Available from http://www.scib.gc.ca/spp_pages/brass/index_e.php [accessed August 2004].
- Westwood, J.O. 1833. Descriptions of several new British forms amongst the parasitic hymenopterous insects. Philosophical Magazine, **3**(3): 342–344.
- Williams, I.H. 2003. Parasitoids of cabbage seed weevil. *In* Biocontrol of oilseed rape pests. *Edited by* D.V. Alford. Blackwell, Oxford. pp. 97–112.